

Secure Copy®

The easy and safe way to migrate your data

OVERVIEW

MIGRATE SERVER DATA WITH EASE

Moving data onto a new server involves more than merely copying the most recent files and folders. A complete data migration retains the same file securities, permissions, shared folder rules and local group configurations as before. To complete a comprehensive data migration, you need a solution that not only copies the files and folders but also copies their associated attributes, NTFS security settings and local user/group configurations.

ScriptLogic's Secure Copy gives you complete control over your data migration projects and includes the added ability to automatically synchronize data and display post migration metric reports. With Secure Copy, you won't have to worry about copying locked files or folders that don't have administrative permissions; Secure Copy can effectively copy all file/folders while reducing network bandwidth overload. Secure Copy supports all Windows Operating Systems (NT4 to 2008 R2) with a comprehensive data migration and server consolidation capability that can be scheduled — preventing business interruptions and ensuring user productivity.

Secure Copy® is a powerful, comprehensive migration solution that automates the copying of data between Windows® servers without the use of agents or scripts. Whether you're migrating from one server to another, consolidating file servers or moving to a NAS/SAN solution, you can easily copy files and folders, NTFS permissions, file shares, local users and groups, and compression settings. With a multi-threaded high-speed architecture, migration projects are simplified and the time it takes to complete the project is dramatically shortened.

KEY BENEFITS



COMPREHENSIVE DATA MIGRATION

Secure Copy can move files/folders and any associated permissions, users, groups, shares, attributes and compression settings. With comprehensive data migration, rest assured that critical data sets will be copied to the destination.



CONTROL THE MIGRATION PROCESS

Secure Copy's flexible controls allow you to choose which file extensions to migrate along with the added ability to throttle bandwidth. With file inclusion and bandwidth throttling, you'll be able to copy data more efficiently and minimize production impact.



AUTOMATE WITH MIGRATION SCHEDULER

Save time and resources by scheduling migrations to occur on a continual basis. Speed up migrations and enhance automation by using templates from pre-existing copy jobs. Secure Copy supports full, incremental and differential copying.



ANALYZE POST MIGRATION STATISTICS TO ENSURE SUCCESS

Use post-migration statistics to determine the success of your project. Secure Copy's suite of reports, dashboards, views and logs give you the tools needed to analyze your data migration.

SIMPLIFY FILE SERVER MIGRATIONS AND CONSOLIDATIONS

MINIMIZE the amount of time needed to set up new file servers without compromising security

PERFORM data migrations, consolidations and replications with minimal effort using multi-threaded copying architecture

AVOID security weaknesses by copying data with security intact and not having to recreate file permissions by hand

RECREATE file shares and file compression settings automatically during migration

MIGRATE users onto new file servers when it's convenient and without taking applications offline or disconnecting users from the network

OVERCOME the challenges associated with the administrator lacking necessary permissions on a file with Secure Copy's "Administrator Override" feature

ENSURE migration success by using predefined reports, dashboards, summaries and log views to analyze post-migration statistics

LICENSING

Secure Copy is licensed on a per "named server" basis (both source and target require their own license). Talk to your sales representative about project-based licensing.

KEY FEATURES

ENHANCED COPYING CAPABILITY

Migrate data without losing NTFS permission structures, file shares and local user/group settings. Maintained security settings ensure that the right users can access data after the migration is complete.

TIME-SAVING TECHNOLOGY

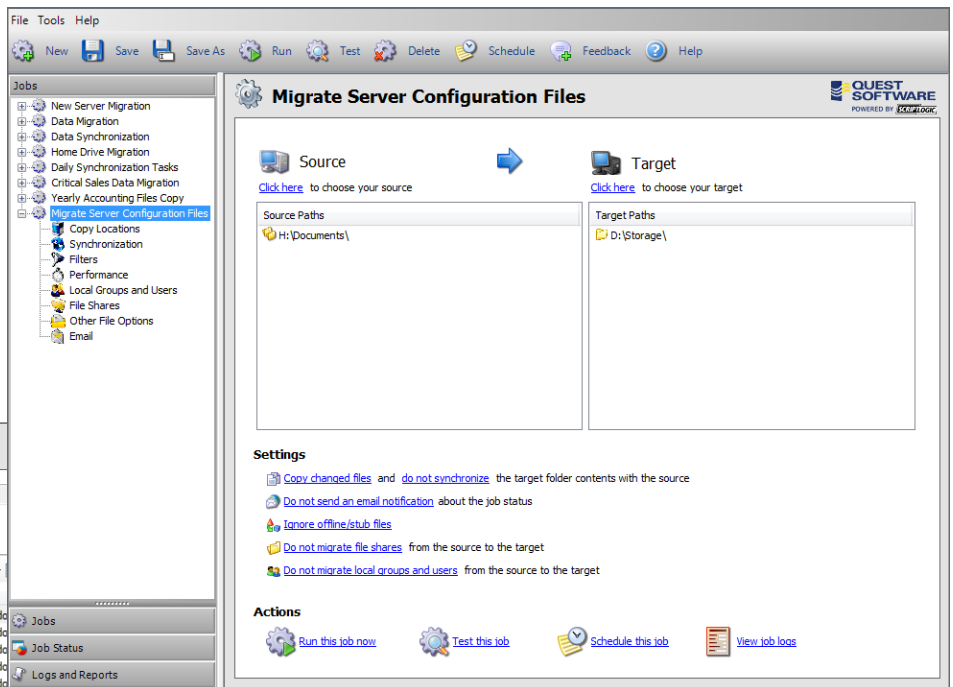
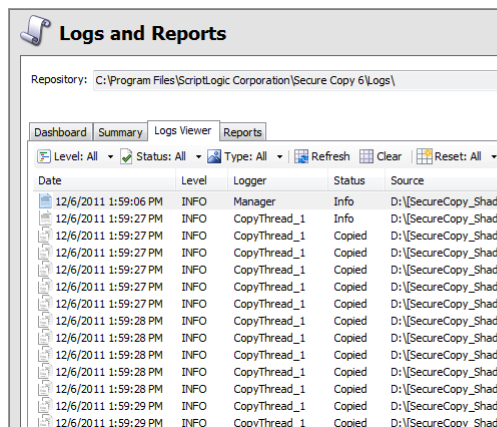
Secure Copy's engine component supports both multi-threading and bandwidth-throttling. With complete control of data migration speed, you can effectively scale data migrations to your business processes.

HANDS-FREE AUTOMATION

By leveraging Secure Copy's migration scheduler, job importer and command line, you can decrease down time. Secure Copy's ability to copy data and security using full, differential and incremental methods gives you better control over your data.

REPORTING TOOLS FOR POST-MIGRATION ANALYSIS

Secure Copy's logs, reports, dashboards and views help you maintain compliance and ensure a successful data migration. Leverage these comprehensive reporting tools to analyze post-migration statistics.



Detailed logging makes it easy to diagnose any issues that may be preventing the migration from completing successfully.