



SECURITY EXPLORER[®]

VERSION 8

ScriptLogic[®] **Security Explorer[®]** *VERSION 8* **Installation Guide**



A QUEST SOFTWARE COMPANY

© 2011 by ScriptLogic Corporation
All rights reserved.

This publication is protected by copyright and all rights are reserved by ScriptLogic Corporation. It may not, in whole or part, be copied, photocopied, reproduced, translated, or reduced to any electronic medium or machine-readable form without prior consent, in writing, from ScriptLogic Corporation. This publication supports Security Explorer 8.x. It is possible that it may contain technical or typographical errors. ScriptLogic Corporation provides this publication “as is,” without warranty of any kind, either expressed or implied.

ScriptLogic Corporation

6000 Broken Sound Parkway NW
Boca Raton, Florida 33487-2742

1.561.886.2400

www.scriptlogic.com

Trademark Acknowledgements:

ScriptLogic and Security Explorer are trademarks and registered trademarks of ScriptLogic Corporation. Quest and Quest Software are trademarks and registered trademarks of Quest Software, Inc. All other trademarks are property of their respective owners.

DOCUMENTATION CONVENTIONS

Typeface Conventions

Bold Indicates a button, menu selection, tab, dialog box title, text to type, selections from drop-down lists, or prompts on a dialog box.

CONTACTING SCRIPTLOGIC

ScriptLogic may be contacted about any questions, problems or concerns you might have at:



ScriptLogic Corporation
6000 Broken Sound Parkway NW
Boca Raton, Florida 33487-2742



561.886.2400 Sales and General Inquiries
561.886.2450 Technical Support



561.886.2499 Fax



www.scriptlogic.com

SCRIPTLOGIC ON THE WEB

ScriptLogic can be found on the web at www.scriptlogic.com. Our web site offers customers a variety of information:

- Download product updates, patches and/or evaluation products.
- Locate product information and technical details.
- Find out about Product Pricing.
- Search the Knowledge Base for Technical Notes containing an extensive collection of technical articles, troubleshooting tips and white papers.
- Search Frequently Asked Questions, for the answers to the most common non-technical issues.
- Participate in Discussion Forums to discuss problems or ideas with other users and ScriptLogic representatives.

Contents

INSTALLING SECURITY EXPLORER.....	1
MINIMUM SYSTEM REQUIREMENTS.....	1
<i>Supported Versions of SharePoint for Security Explorer</i>	<i>1</i>
<i>Supported Versions of SQL Server for Security Explorer</i>	<i>2</i>
<i>Minimum Requirements for Exchange Web Service.....</i>	<i>2</i>
<i>Supported Versions of Microsoft Exchange for Security Explorer</i>	<i>3</i>
<i>User Privilege Requirements</i>	<i>8</i>
<i>Permission Requirements to Manage Microsoft Exchange in Security Explorer</i>	<i>8</i>
BEFORE YOU BEGIN	12
<i>Install Microsoft .NET Framework 4</i>	<i>12</i>
UPGRADING SECURITY EXPLORER.....	12
<i>Back Up Your Files.....</i>	<i>12</i>
<i>Moving Scheduled Backup Jobs.....</i>	<i>12</i>
RUNNING THE SETUP WIZARD.....	13
STARTING SECURITY EXPLORER FOR THE FIRST TIME	16
<i>Applying a License File</i>	<i>16</i>
<i>Evaluating the Product.....</i>	<i>17</i>
VIEWING LICENSES	18
FOR MORE INFORMATION	18
TROUBLESHOOTING	19
USING LOG FILES	19
INSTALLATION ISSUES WITH WINDOWS 64 BIT OPERATING SYSTEMS.....	19

Installing Security Explorer

Security Explorer is provided in a Windows Installer package format, which allows for robust, self-repairing of application files, and ease of installation and software distribution. The Windows Installer service is included with Windows 2000 and later.

MINIMUM SYSTEM REQUIREMENTS

Important: The minimum system requirements listed are for the computer on which Security Explorer is installed. Security Explorer can be used to manage permissions on other computers that have Windows NT or Windows 2000 as an operating system.

- Processor: Pentium 600MHz or faster
- Operating Systems:
 - Windows XP
 - Windows Vista
 - Windows 7
 - Windows Server 2003
 - Windows Server 2008
 - Windows Server 2008 R2
- Microsoft .NET Framework 4
- Disk Space: 50 MB
- Memory: 256 MB
- Screen resolution: 1024 x 768

Supported Versions of SharePoint for Security Explorer

- Microsoft Office SharePoint Server 2007
 - Windows SharePoint Services 3.0
- Microsoft SharePoint Server 2010
 - SharePoint Foundation 2010

Supported Versions of SQL Server for Security Explorer

- SQL Server 2000
- SQL Server 2005
- SQL Server Express 2005
- SQL Server 2008
- SQL Server 2008 R2
- Microsoft SQL Server Desktop Engine (MSDE)

Minimum Requirements for Exchange Web Service

Client Access Server Configuration

1. Check that the following Windows services are started
 - IIS Admin Service
 - Microsoft Exchange Information Store
 - Microsoft Exchange System Attendant
2. Check that the Exchange Web Service Web Application is configured correctly in IIS:
 - **Authentication:** Windows Authentication is Enabled
 - **SSL Settings:** Require SSL is switched on

Client configuration

1. Open port 443 on the firewall.
2. Install an Exchange Server SSL certificate.

Supported Versions of Microsoft Exchange for Security Explorer

Exchange 2000/2003

Client Type	Prerequisites
32 Bit OS: Windows XP 32 bit Windows Server 2003 32 bit	<ul style="list-style-type: none"> ■ CDOEXM Can be installed with Microsoft Exchange 2003 Management Tools, which comes from Microsoft Exchange Server 2003 Service Pack 2 (http://www.microsoft.com/downloads/details.aspx?FamilyID=535bef85-3096-45f8-aa43-60f1f58b3c40&DisplayLang=en). To install Microsoft Exchange 2003 Management Tools, the following must be installed: <ul style="list-style-type: none"> ■ Internet Information Services ■ Windows Administration Tools Pack http://www.microsoft.com/downloads/details.aspx?FamilyID=86b71a4f-4122-44af-be79-3f101e533d95&DisplayLang=en
Windows Vista 32 bit Windows Vista 64 bit	<ul style="list-style-type: none"> ■ CDOEXM Can be installed with Exchange System Manager for Windows Vista (http://www.microsoft.com/downloads/details.aspx?familyid=e17e7f31-079a-43a9-bff2-0a110307611e&displaylang=en) To install Exchange System Manager Exchange 2003 Management Tools, the following must be installed: <ul style="list-style-type: none"> ■ Internet Information Services ■ Microsoft Exchange Server MAPI Client and Collaboration Data Objects http://www.microsoft.com/downloads/details.aspx?familyid=e17e7f31-079a-43a9-bff2-0a110307611e&displaylang=en ■ Windows Administration Tools Pack 32 bit version: http://www.microsoft.com/downloads/details.aspx?FamilyID=86b71a4f-4122-44af-be79-3f101e533d95&DisplayLang=en 64 bit version: http://www.microsoft.com/downloads/details.aspx?familyid=514BD06E-F3BC-4054-8429-C49F51E2190B&displaylang=en
Windows 7 32 bit Windows Server 2008 32 bit	Not officially supported. There is no CDOEXM version. Please see Exchange System Manager for Windows Vista - Release Notes.doc .
64 Bit OS: Windows XP 64 bit Windows 7 64 bit Windows Server 2003 64 bit Windows Server 2008 64 bit Windows Server 2008 R2	Security Explorer cannot manage Exchange 2003 if Security Explorer is installed on a 64 bit operating system. There is no CDOEXM version for a 64 bit operating system and Security Explorer requires CDOEXM.

Exchange 2007

Client Type	Prerequisites
Windows XP 32 bit Windows XP 64 bit Windows Server 2003 32 bit Windows Server 2003 64 bit	<p>Exchange 2007 Management Tools Comes from Microsoft Exchange Server 2007 Service Pack 3 http://www.microsoft.com/downloads/en/details.aspx?FamilyID=1687160b-634a-43cb-a65a-f355cff0afa6&displaylang=en</p> <p>To install Exchange 2007 Management Tools, the following must be installed:</p> <ul style="list-style-type: none"> ■ Internet Information Services ■ .NET Framework 3.5 SP1 http://www.microsoft.com/downloads/details.aspx?familyid=ab99342f-5d1a-413d-8319-81da479ab0d7&displaylang=en ■ Microsoft Management Console (MMC) 3.0 http://support.microsoft.com/?kbid=907265 ■ Windows PowerShell http://www.microsoft.com/windowsserver2003/technologies/management/powershell/download.msp
Windows Vista 32 bit Windows Vista 64 bit Windows 7 32 bit Windows 7 64 bit Windows Server 2008 32 bit Windows Server 2008 64 bit	<p>Exchange 2007 Management Tools Comes from Microsoft Exchange Server 2007 Service Pack 3 http://www.microsoft.com/downloads/en/details.aspx?FamilyID=1687160b-634a-43cb-a65a-f355cff0afa6&displaylang=en</p> <p>Before installing Exchange 2007 Management Tools, the following must be installed:</p> <ul style="list-style-type: none"> ■ Internet Information Services 6 (IIS 6 Management Console, IIS 6 Metabase and IIS 6 configuration compatibility are mandatory) ■ Windows PowerShell (only for Windows Vista) http://www.microsoft.com/windowsserver2003/technologies/management/powershell/download.msp <p>To manage Exchange 2007 if Security Explorer is installed on 32 bit or 64 bit Vista (with or without SP1), Exchange Server 2007 SP1 or higher tools must be installed. Security Explorer cannot manage Exchange 2007 from Vista if a previous version of the tools is installed. See http://support.microsoft.com/kb/931903.</p>
Windows Server 2008 R2	<p>Exchange 2007 Management Tools Comes from Microsoft Exchange Server 2007 Service Pack 3 http://www.microsoft.com/downloads/en/details.aspx?FamilyID=1687160b-634a-43cb-a65a-f355cff0afa6&displaylang=en</p> <p>Before installing Exchange 2007 Management Tools, the following must be installed:</p> <ul style="list-style-type: none"> ■ Internet Information Services 6 (IIS 6 Management Console, IIS 6 Metabase and IIS 6 configuration compatibility are mandatory)*

Exchange 2003 – Exchange 2007 (Mixed Mode)

Client Type	Prerequisites
32 bit OS: Windows XP32 bit Windows Server 2003 32 bit	<ul style="list-style-type: none">■ Exchange 2007 SP1 Management Tools<ul style="list-style-type: none">■ 32 bit version can be downloaded from http://www.microsoft.com/downloads/details.aspx?familyid=6be38633-7248-4532-929b-76e9c677e802&displaylang=en#filelist■ 64 bit version comes from Microsoft Exchange Server 2007■ CDOEXM<p>Can be installed with Microsoft Exchange 2003 Management Tools, which comes from Microsoft Exchange Server 2003 distributive or from Microsoft Exchange Server 2003 Service Pack 2 (http://www.microsoft.com/downloads/details.aspx?FamilyID=535bef85-3096-45f8-aa43-60f1f58b3c40&DisplayLang=en)</p> <p>Important: Exchange 2007 Management Tools should be installed before Exchange 2003 Management Tools. Order is important.</p> <p>To install Exchange 2007 Management Tools, the following must be installed:</p> <ul style="list-style-type: none">■ Internet Information Services■ .NET Framework 3.5 SP1 http://www.microsoft.com/downloads/details.aspx?familyid=ab99342f-5d1a-413d-8319-81da479ab0d7&displaylang=en■ Microsoft Management Console (MMC) 3.0 http://support.microsoft.com/?kbid=907265■ Windows PowerShell http://www.microsoft.com/windowsserver2003/technologies/management/powershell/download.msp <p>To install Microsoft Exchange 2003 Management Tool, IIS and Windows Administration Tools Pack are required, so to install CDOEXM the following are needed:</p> <ul style="list-style-type: none">■ Internet Information Services■ Windows Administration Tools Pack http://www.microsoft.com/downloads/details.aspx?FamilyID=86b71a4f-4122-44af-be79-3f101e533d95&DisplayLang=en

Client Type	Prerequisites
Windows Vista 32 bit Windows Vista 64 bit	<ul style="list-style-type: none"> ■ Exchange 2007 SP1 Management Tools <ul style="list-style-type: none"> ■ 32 bit version can be downloaded from http://www.microsoft.com/downloads/details.aspx?familyid=6be38633-7248-4532-929b-76e9c677e802&displaylang=en#filelist ■ 64 bit version comes from Microsoft Exchange Server 2007 ■ CDOEXM Can be installed with Exchange System Manager for Windows Vista (http://www.microsoft.com/downloads/details.aspx?familyid=e17e7f31-079a-43a9-bff2-0a110307611e&displaylang=en) <p>Important: Exchange 2007 Management Tools should be installed before Exchange System Manager. Order is important.</p> <p>To install Exchange 2007 Management Tools, the following must be installed:</p> <ul style="list-style-type: none"> ■ Internet Information Services 6 (IIS 6 Management Compatibility: IIS 6 Metabase Compatibility and IIS 6 Management Console are mandatory) ■ Windows PowerShell http://www.microsoft.com/windowsserver2003/technologies/management/powershell/download.msp <p>To install Exchange System Manager, the following must be installed:</p> <ul style="list-style-type: none"> ■ Internet Information Services ■ Microsoft Exchange Server MAPI Client and Collaboration Data Objects http://www.microsoft.com/downloads/details.aspx?familyid=e17e7f31-079a-43a9-bff2-0a110307611e&displaylang=en ■ Windows Administration Tools Pack 32 bit version: http://www.microsoft.com/downloads/details.aspx?FamilyID=86b71a4f-4122-44af-be79-3f101e533d95&DisplayLang=en 64 bit version: http://www.microsoft.com/downloads/details.aspx?familyid=514BD06E-F3BC-4054-8429-C49F51E2190B&displaylang=en <p>Note: Exchange 2007 Management Tools SP1 must be installed. Security Explorer cannot manage Exchange 2007 from Vista of a previous version of the tools is installed.</p>
Windows 7 32 bit Windows 2008 server 32 bit	Not officially supported. There is no CDOEXM version. Please see Exchange System Manager for Windows Vista - Release Notes.doc .
64bit OS: Windows XP 64 bit Windows 7 64 bit Windows Server 2003 64 bit Windows Server 2008 64 bit Windows Server 2008 R2	Not supported There is no CDOEXM version for a 64 bit operating system and Security Explorer requires CDOEXM if there is Exchange Server 2003 in Organization.

Exchange 2010

Client Type	Prerequisites
Windows XP 32 bit Windows Vista 32 bit Windows Vista 64 bit Windows Server 2003 32 bit Windows Server 2003 64 bit Windows Server 2008 32 bit Windows Server 2008 64 bit	<ul style="list-style-type: none"> ■ Windows Management Framework Core 32 bit and 64 bit versions for different operating systems can be downloaded from http://support.microsoft.com/kb/968930
Windows 7 32 bit Windows 7 64 bit Windows Server 2008 R2	No prerequisites are required. Windows Management Framework Core components are included in Windows 7 and Windows 2008 Server R2 operating systems.
Windows XP 64 bit	Not supported. There is no Windows Management Framework Core for Windows XP 64 bit.

Exchange 2007 – Exchange 2010 (Mixed Mode)

Client Type	Prerequisites
Windows XP 32 bit Windows Vista 32 bit Windows Vista 64 bit Windows Server 2003 32 bit Windows Server 2003 64 bit Windows Server 2008 32 bit Windows Server 2008 64 bit	<ul style="list-style-type: none"> ■ Windows Management Framework Core <ul style="list-style-type: none"> ■ 32 bit and 64 bit versions for different operating systems can be downloaded from http://support.microsoft.com/kb/968930 ■ Exchange 2007 SP1 Management Tools <ul style="list-style-type: none"> ■ 32 bit version can be downloaded from http://www.microsoft.com/downloads/details.aspx?familyid=6be38633-7248-4532-929b-76e9c677e802&displaylang=en#filelist ■ 64 bit version comes from Microsoft Exchange Server 2007 <p>To install Exchange 2007 Management Tools, the following must be installed:</p> <ul style="list-style-type: none"> ■ Internet Information Services 6 (IIS 6 Management Compatibility: IIS 6 Metabase Compatibility and IIS 6 Management Console are mandatory) ■ .NET Framework 3.5 SP1 http://www.microsoft.com/downloads/details.aspx?familyid=ab99342f-5d1a-413d-8319-81da479ab0d7&displaylang=en ■ Microsoft Management Console (MMC) 3.0 (only for WindowsXP and Windows Server 2003) http://support.microsoft.com/?kbid=907265 ■ Windows PowerShell http://www.microsoft.com/windowsserver2003/technologies/management/powershell/download.msp

Client Type	Prerequisites
Windows 7 32 bit Windows 7 64 bit Windows Server 2008 R2	Exchange 2007 SP1 Management Tools <ul style="list-style-type: none"> ■ 32 bit version can be downloaded from http://www.microsoft.com/downloads/details.aspx?familyid=6be38633-7248-4532-929b-76e9c677e802&displaylang=en#filelist ■ 64 bit version comes from Microsoft Exchange Server 2007 <p>To install Exchange 2007 Management Tools, the following must be installed:</p> <ul style="list-style-type: none"> ■ Internet Information Services 6 (IIS 6 Management Compatibility: IIS 6 Metabase Compatibility and IIS 6 Management Console are mandatory) ■ .NET Framework 3.5 SP1 http://www.microsoft.com/downloads/details.aspx?familyid=ab99342f-5d1a-413d-8319-81da479ab0d7&displaylang=en <p>Exchange 2007 SP2 Management Tools cannot be installed on Windows 7 and Windows Server 2008 R2, however Exchange 2007 SP1 Management Tools can be.</p>
Windows XP 64 bit	Not supported. There is no Windows Management Framework Core for Windows XP 64 bit.

User Privilege Requirements

- To start Security Explorer, a user must be a member of the local Administrators, otherwise errors messages display.

Permission Requirements to Manage Microsoft Exchange in Security Explorer

- To connect to an Exchange Server, a user must be a domain user, have mailbox on one of the Exchange Servers, and be an Exchange Administrator.
 - To connect to an Exchange 2000/2003 Organization, a user must be a domain user, have a mailbox on one of the Exchange 2003 Servers, and have been delegated Exchange Full Administrator rights on Exchange Organization level.
 - To connect to an Exchange 2007 Organization (Mixed Mode), a user must be a domain user, have a mailbox on one of the Exchange Servers, be a member of the Exchange Organization Management group, and have impersonation rights on Exchange 2007 client access server(s) and mailbox database(s). For more details on configuring user impersonation please see <http://msdn.microsoft.com/en-us/library/bb204095%28EXCHG.80%29.aspx>.
 - To connect to an Exchange 2003-2007 Organization (Mixed Mode), a user must be a domain user, have a mailbox on Exchange 2007 Server, have been delegated Exchange Full Administrator rights on Exchange Organization level, be a member of the Exchange Organization Management group, and have impersonation rights on Exchange 2007 client access server(s) and mailbox database(s). For more details on configuring user impersonation please see <http://msdn.microsoft.com/en-us/library/bb204095%28EXCHG.80%29.aspx>.

- To connect to an Exchange 2010 Organization, a user must be a domain user, have a mailbox on one of Exchange Servers, be a member of the Organization Management group, and have impersonation rights. For more details on configuring user impersonation please see <http://msdn.microsoft.com/en-us/library/bb204095%28EXCHG.140%29.aspx>.
- To connect to an Exchange 2007-2010 Organization (Mixed Mode), a user must be a domain user, have a mailbox on Exchange 2010 Server, be a member of the Exchange Organization Administrators group, and have impersonation rights on all versions of Exchange servers. For more details on configuring user impersonation please see <http://msdn.microsoft.com/en-us/library/bb204095%28EXCHG.80%29.aspx> and <http://msdn.microsoft.com/en-us/library/bb204095%28EXCHG.140%29.aspx>.
- Only a user who is a Domain Administrator and Exchange Administrator has no restrictions for mailbox management in Security Explorer. There are possible restrictions in Security Explorer for mailbox management.

If a user uses Run As to start Security Explorer and that user does not have enough privileges and enters valid Alternative Credentials (Domain User, Exchange Administrator, Local Administrator, Has Mailbox, Has Impersonation), there are some restrictions with mailbox management in Security Explorer.

Exchange 2000/2003

Privileges for user entered in Run as window	Privileges used to connect to Exchange Server	Possible actions in Security Explorer
Domain Administrator Full Exchange Administrator	Windows Authentication	No restrictions
	Valid Alternative Credential	
Domain User Full Exchange Administrator	Windows Authentication	Cannot create and delete mailboxes
	Valid Alternative Credential	Cannot manage Active Directory and mailbox permissions for mailboxes (View only mode)
Domain User	Windows Authentication	Cannot connect to Exchange
	Valid Alternative Credential	Cannot create and delete mailboxes Cannot manage Active Directory permissions for mailboxes (View only mode)

Exchange 2007

Privileges for user entered in Run as window	Privileges used to connect to Exchange Server	Possible actions in Security Explorer
Domain Administrator Exchange Organization Administrator	Windows Authentication	No restrictions
	Valid Alternative Credential	
Domain User Exchange Organization Administrator	Windows Authentication	Cannot create, delete and manage distribution groups. Cannot manage Active Directory permissions for mailboxes and public folders (View only mode)
	Valid Alternative Credential	
Domain User	Windows Authentication	Cannot connect to Exchange
	Valid Alternative Credential	Cannot create, delete and manage security and distribution groups (except dynamic distribution groups) Cannot manage Active Directory permissions for mailboxes and public folders (View only mode)

Exchange 2010

Privileges for user entered in Run as window	Privileges used to connect to Exchange Server	Possible actions in Security Explorer
Domain Administrator Exchange Organization Administrator	Windows Authentication	No restrictions
	Valid Alternative Credential	
Domain User Exchange Organization Administrator	Windows Authentication	Cannot create, delete and manage distribution groups. Cannot manage Active Directory permissions for mailboxes and public folders (View only mode)
	Valid Alternative Credential	
Domain User	Windows Authentication	Cannot connect to Exchange
	Valid Alternative Credential	Cannot create, delete and manage security and distribution groups (except dynamic distribution groups) Cannot create mail-enabled public folders Cannot manage Active Directory permissions for mailboxes and public folders (View only mode)

Mixed mode (Exchange 2003 – 2007)

Privileges for user entered in Run as window	Privileges used to connect to Exchange Server	Possible actions in Security Explorer
Domain Administrator Exchange Organization Administrator (2007)	Windows Authentication	No restrictions
	Valid Alternative Credential	
Domain User Exchange Organization Administrator (2007)	Windows Authentication	Cannot create, delete and manage distribution groups. Cannot manage Active Directory permissions for mailboxes (View only mode)
	Valid Alternative Credential	
Domain User	Windows Authentication	Cannot connect to Exchange
	Valid Alternative Credential	Cannot create, delete and manage security and distribution groups (except dynamic distribution groups) Cannot manage Active Directory permissions for mailboxes (View only mode)

Mixed mode (Exchange 2007 – 2010)

Privileges for user entered in Run as window	Privileges used to connect to Exchange Server	Possible actions in Security Explorer
Domain Administrator Exchange Organization Administrator (2007)	Windows Authentication	No restrictions
	Valid Alternative Credential	
Domain User Exchange Organization Administrator (2007)	Windows Authentication	Cannot create, delete and manage distribution groups. Cannot manage Active Directory permissions for mailboxes and public folders (View only mode)
	Valid Alternative Credential	
Domain User	Windows Authentication	Cannot connect to Exchange
	Valid Alternative Credential	Cannot create, delete and manage security and distribution groups (except dynamic distribution groups) Cannot manage Active Directory permissions for mailboxes and public folders (View only mode)

BEFORE YOU BEGIN

Download the latest version of Security Explorer from the ScriptLogic Web site:

<http://www.scriptlogic.com/support>

Install Microsoft .NET Framework 4

If you do not have Microsoft .NET Framework 4 on the computer where you want to install Security Explorer, the Security Explorer installation process provides an opportunity to download and install Microsoft .NET Framework 4.

You must restart the install process once Microsoft .NET Framework 4 is installed, so to avoid this you might want to install it before you begin the installation of Security Explorer.

UPGRADING SECURITY EXPLORER

Back Up Your Files

As with all software installations, it is recommended that you back up your files before installing the new software. The simplest way to back up your files is to navigate to the directory on the server where Security Explorer is installed. Press CTRL-A to select all files in this folder. Press CTRL-C to copy the files to the clipboard. Create a new folder and press CTRL-V to paste these files into this new backup folder.

Security Explorer is provided in a Windows Installer package format, which allows for robust, self-repairing of application files, and ease of installation and software distribution. The Windows Installer service is included with Windows 2000 and later.

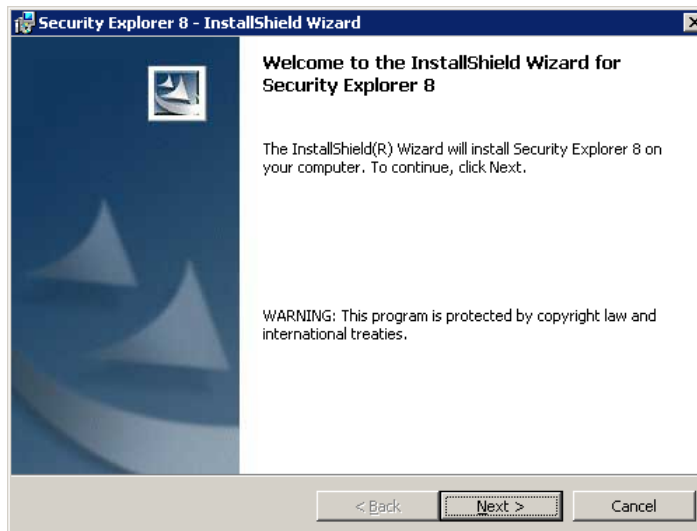
Moving Scheduled Backup Jobs

Security Explorer version 8.x uses a different installation folder location than Security Explorer version 7.x, so you need to copy the **SavedTasks.xml** file from the Security Explorer 6 installation folder (The default location for this folder is **C:\Program Files\ScriptLogic Corporation\Security Explorer 7**) to the Security Explorer 8 installation folder (The default location for this folder is **C:\Program Files\ScriptLogic Corporation\Security Explorer 8**).

RUNNING THE SETUP WIZARD

Important: If you are running Active Administrator on the same computer as Security Explorer, exit Active Administrator and stop all Active Administrator services before upgrading to Security Explorer.

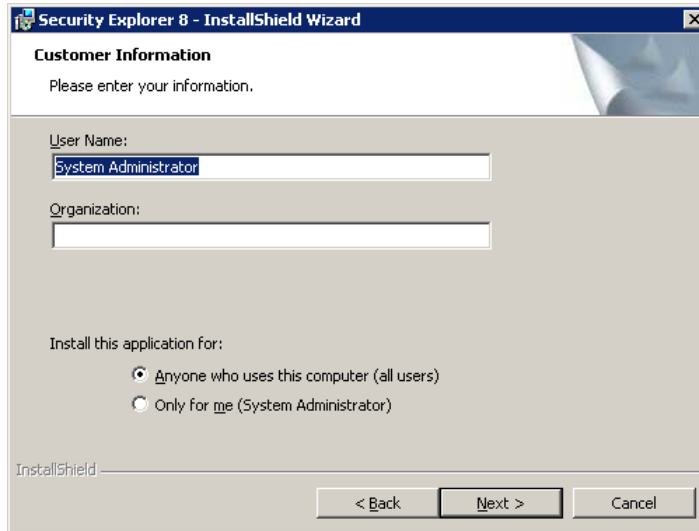
1. After downloading Security Explorer, double-click the .msi file. The **Welcome** box appears.



2. Click **Next**. The **License Agreement** box appears.

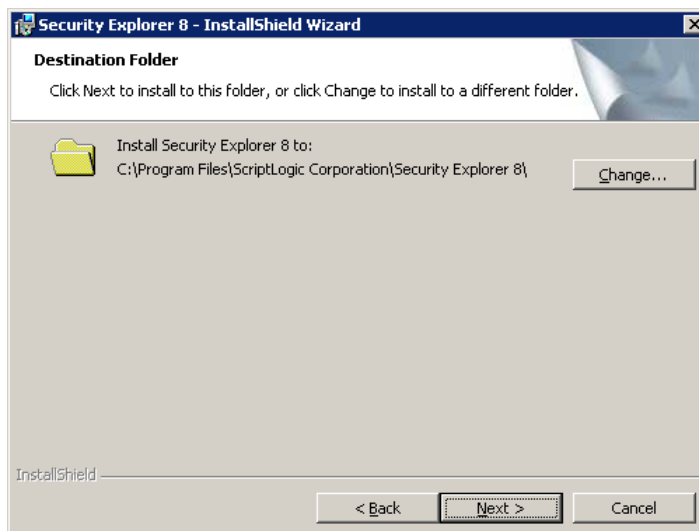


3. Select **I accept the terms in the license agreement**, and then click **Next**. The **Customer Information** box appears.



The screenshot shows the 'Customer Information' dialog box of the Security Explorer 8 - InstallShield Wizard. The title bar reads 'Security Explorer 8 - InstallShield Wizard'. The main heading is 'Customer Information' with a sub-heading 'Please enter your information.' Below this, there are two text input fields: 'User Name:' containing 'System Administrator' and 'Organization:' which is empty. Underneath, the text 'Install this application for:' is followed by two radio button options: 'Anyone who uses this computer (all users)' (which is selected) and 'Only for me (System Administrator)'. At the bottom left, the text 'InstallShield' is visible. At the bottom right, there are three buttons: '< Back', 'Next >', and 'Cancel'.

4. If necessary, change the default values in the **User Name** and **Organization** boxes. Also choose whether to permit access to all users or just yourself. Click **Next**. The **Destination Folder** box displays the default installation path.

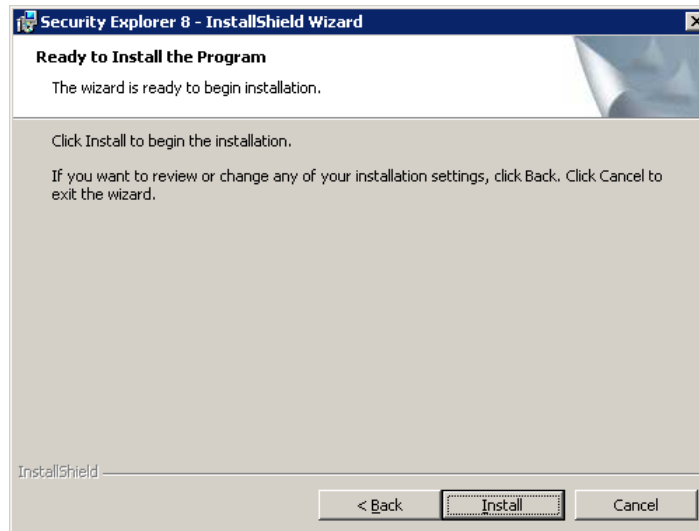


The screenshot shows the 'Destination Folder' dialog box of the Security Explorer 8 - InstallShield Wizard. The title bar reads 'Security Explorer 8 - InstallShield Wizard'. The main heading is 'Destination Folder' with a sub-heading 'Click Next to install to this folder, or click Change to install to a different folder.' Below this, there is a folder icon and the text 'Install Security Explorer 8 to: C:\Program Files\ScriptLogic Corporation\Security Explorer 8\'. To the right of the path is a 'Change...' button. At the bottom left, the text 'InstallShield' is visible. At the bottom right, there are three buttons: '< Back', 'Next >', and 'Cancel'.

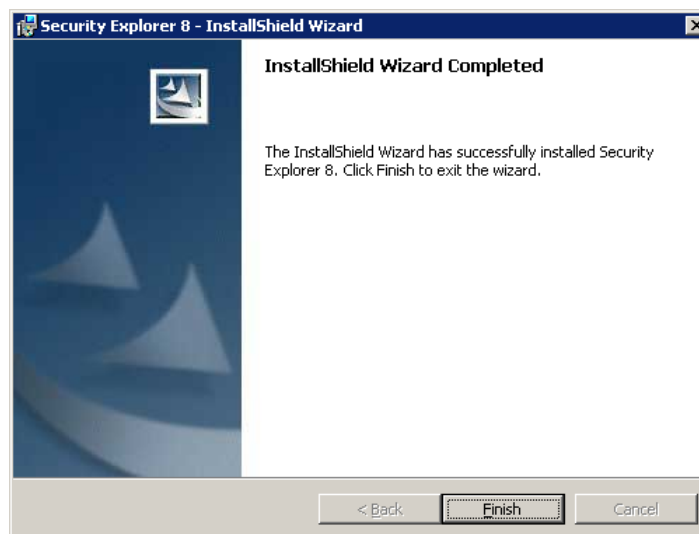
- To change the installation path, click **Change**, and then select a new path.

5. Click **Next**. The **Ready to Install** box appears.

Note: If Microsoft .NET Framework 4 is not installed, you see a message box. Click **Download the Microsoft .NET Framework 4**. You will need to restart the Security Explorer installation process.



6. Click **Install**. A progress bar displays the installation process. When the installation is complete, the final box appears.



7. Click **Finish**.

STARTING SECURITY EXPLORER FOR THE FIRST TIME

Depending on your system, choose one of these ways to start Security Explorer:

- ▶ Click **Start**, point to **All Programs > ScriptLogic Corporation > Security Explorer 8**, and then select **Security Explorer 8**.

- ▶ Click **Start**, and then click  **Security Explorer**

Each time you run the program you are greeted by the splash screen, which displays program version and copyright information. To view more detail about the version of Security Explorer in use, choose **About** from the **Help** menu.


Applying a License File

The first time you start Security Explorer after installation, you see the **New Installation** box, which allows you to choose whether to apply a license file for full functionality, or evaluate the full product.



Security Explorer requires a valid license file in order to function properly. If you have a company license file or were provided with an evaluation or temporary license file, you must enter the location and filename in the **License File** box.

The license file is approximately 1KB in size and has a .lic file extension. Your Sales account executive or License Team specialist should have emailed this file to you as an attachment.

- ▶ Click  to locate the license file, and then click **Apply License File**.

Evaluating the Product

Note: The full and evaluation versions of are identical. The license file is the sole determinant of program functionality. In the File and Print Management modules (NTFS Security, Share Security, and Printer Security) you are limited to two servers and 2,500 files, folders, printers, or shares. In all other modules, you have unlimited searching with no changes. Extended evaluations with more functionality are available upon request.

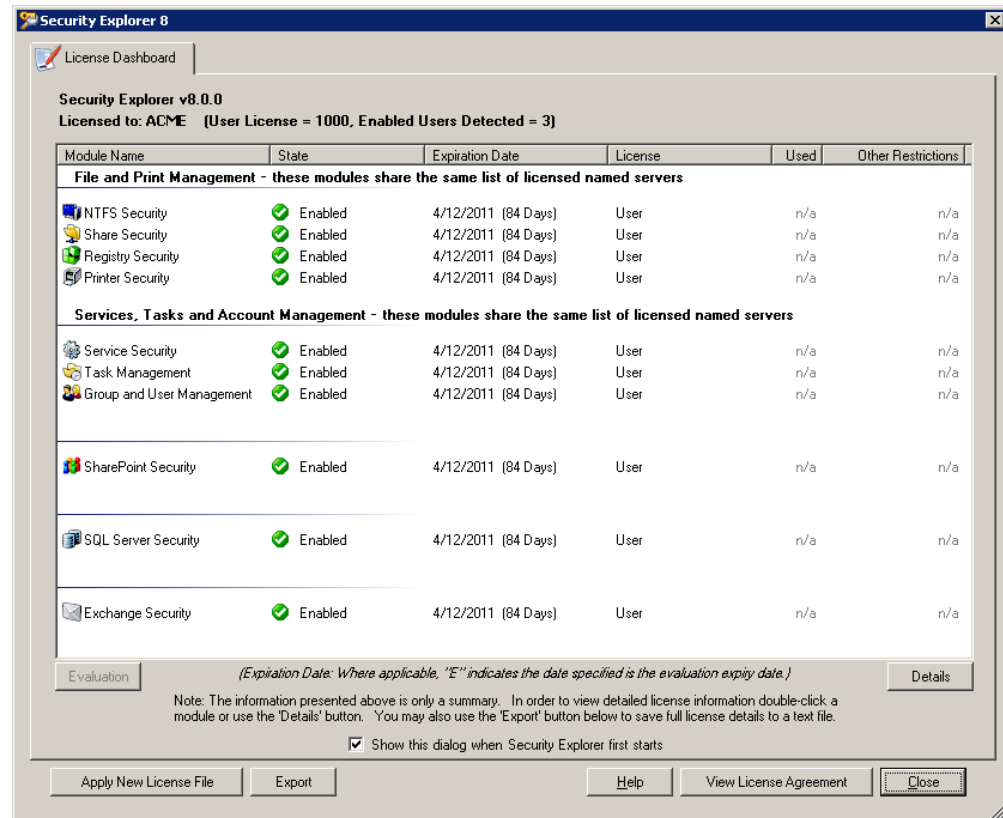
- ▶ If you are evaluating the software and would like to use the preset values for the number of licenses, objects, and evaluation days, click **Begin Evaluation**.



The evaluation countdown displays at the bottom of the box. The countdown begins on the day you click **Begin Evaluation**. You can apply a license at any time by choosing **Help** ▶ **View License Dashboard**.

VIEWING LICENSES

When Security Explorer opens, the **License Dashboard** displays which modules are enabled or disabled, the license or evaluation expiration date, the number of licenses used and available, and any restrictions on the license or evaluation.



Show this dialog when Security Explorer first starts

By default, the **License Dashboard** displays each time you start Security Explorer. To suppress the display, clear the check box. To display the License Dashboard, select **View License Dashboard** from the **Help** menu.

Button	Description
Evaluation	Run a disabled module in evaluation mode. Unavailable if no modules are disabled.
Details	View details about a license or remove a server from the license.
Apply New License File	Apply a new license file (*.lic)
Export	Export the selected license file to a text file (*.txt)
View License Agreement	Open the Transaction Product Agreement (*.rtf)

FOR MORE INFORMATION

Proceed to the Security Explorer User Guide for instructions on using Security Explorer.

Troubleshooting

In its Knowledge Base, ScriptLogic Corporation has a library of articles that may provide an answer to a problem you are experiencing. Before calling technical support, check to see if your problem is documented here. You might also browse the Discussion Forums to see if anyone else is experiencing the same issue.

<http://www.scriptlogic.com/support>

USING LOG FILES

By default, there is one log file written to the Security Explorer installation directory. To get more log information run Security Explorer.exe with /d key to write two log files to the installation directory.

```
C:\Program Files\ScriptLogic Corporation\Security Explorer 8
\SecurityExplorer.exe /d
```

For the Exchange Security module, the ExchangeAccess log files contain Exchange module log data.

INSTALLATION ISSUES WITH WINDOWS 64 BIT OPERATING SYSTEMS

When Microsoft Remote Server Administration Tools (RSAT) is installed on 64-bit versions of Windows Vista or Windows 7, the files **adprop.dll.mui** and **dsadmin.dll.mui** are not installed to the correct location, so you may see the message — **The resource loader cache does not have loaded MUI entry** — when attempting administrative operations on Active Directory objects from within Security Explorer.

1. Download the 32-bit version of the Microsoft Remote Server Administration Tools (RSAT) to a local directory on the 64-bit Windows Vista or Windows 7 computer where Security Explorer is installed.

Windows Vista

<http://www.microsoft.com/downloads/details.aspx?FamilyID=9ff6e897-23ce-4a36-b7fc-d52065de9960&DisplayLang=en>

Windows 7

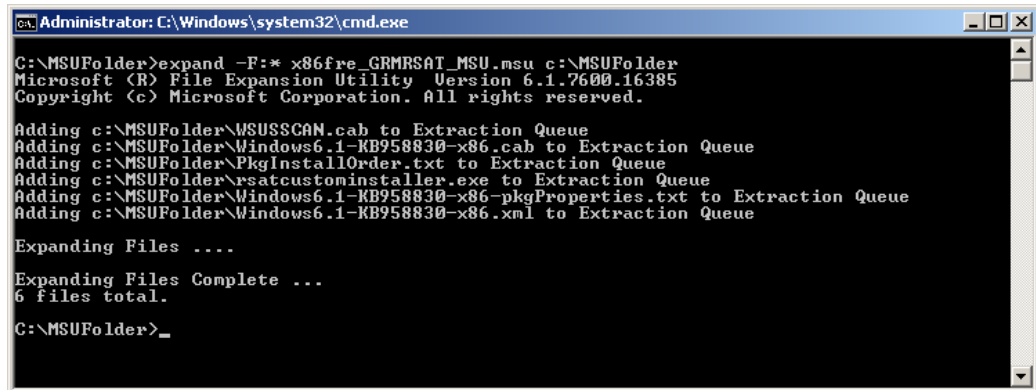
<http://www.microsoft.com/downloads/details.aspx?FamilyID=7D2F6AD7-656B-4313-A005-4E344E43997D&displaylang=en>

Note: The 32-bit version of the Windows 7 RSAT package is used in the following examples.

- At a command prompt, use the **Expand** command to extract the **.cab** file from the Microsoft Update Standalone Package (MSU) package.

For example, if the RSAT package was saved to C:\MSUFolder, then type:

```
expand -F:* x86fre_GRMRSAT_MSU.msu c:\MSUFolder
```



```

Administrator: C:\Windows\system32\cmd.exe

C:\MSUFolder>expand -F:* x86fre_GRMRSAT_MSU.msu c:\MSUFolder
Microsoft (R) File Expansion Utility Version 6.1.7600.16385
Copyright (c) Microsoft Corporation. All rights reserved.

Adding c:\MSUFolder\WSUSSCAN.cab to Extraction Queue
Adding c:\MSUFolder\Windows6.1-KB958830-x86.cab to Extraction Queue
Adding c:\MSUFolder\PkgInstallOrder.txt to Extraction Queue
Adding c:\MSUFolder\rsatcustominstaller.exe to Extraction Queue
Adding c:\MSUFolder\Windows6.1-KB958830-x86-pkgProperties.txt to Extraction Queue
Adding c:\MSUFolder\Windows6.1-KB958830-x86.xml to Extraction Queue

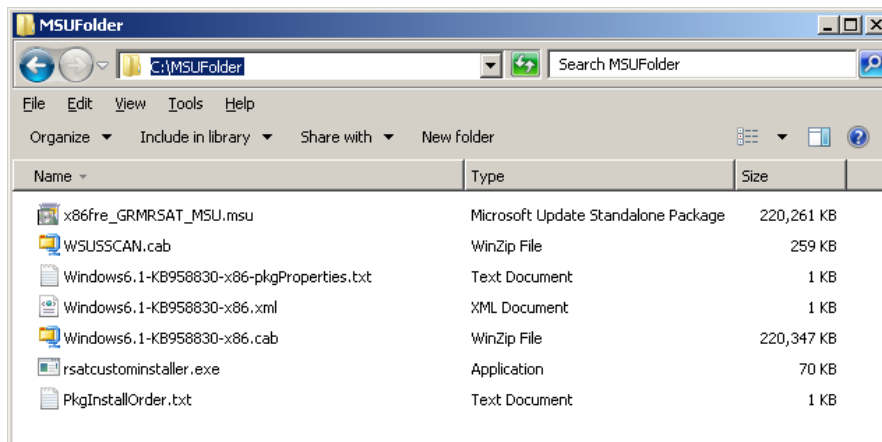
Expanding Files ...

Expanding Files Complete ...
6 files total.

C:\MSUFolder>_

```

- There will be two **.cab** files in the expansion directory, one with a KB article in the title and one named **WSUSSCAN.cab**.



- Use the **Expand** command to decompress the **.cab** file with the KB article in its title.

Continuing with the example above, if the RSAT package was extracted to C:\MSUFolder, then type:

```
expand Windows6.1-KB958830-x86.cab -F:adprop.dll.mui C:\MSUFolder
```

- After executing the command, the subfolders that are created in the expansion directory correspond to different language versions. Locate the subfolder for language version of the operating system on which the Security Explorer is installed.
- Repeat step #4 to extract **dsadmin.dll.mui**.

Following the example above, the command would be:

```
expand Windows6.1-KB958830-x86.cab -F:dsadmin.dll.mui C:\MSUFolder
```

- Copy **adprop.dll.mui** and **dsadmin.dll.mui** to C:\Windows\SysWOW64\en-US.

If the language version of the operating system is different than what is referenced in the examples above, the files should be copied into the appropriate language resource directory.