



# *SECURE COPY*<sup>®</sup>

**VERSION 6**

## *Secure Copy*<sup>®</sup>

### **VERSION 6**

# *Installation Guide*

**Copyright © 2012 by ScriptLogic Corporation. All rights reserved.**

This publication is protected by copyright and all rights are reserved by ScriptLogic Corporation. It may not, in whole or part, be copied, photocopied, reproduced, translated, or reduced to any electronic medium or machine-readable form without prior consent, in writing, from ScriptLogic Corporation. This publication supports Secure Copy 6.x. It is possible that it may contain technical or typographical errors. ScriptLogic Corporation provides this publication “as is,” without warranty of any kind, either expressed or implied.

**ScriptLogic Corporation**

6000 Broken Sound Parkway NW  
Boca Raton, Florida 33487-2742

1.561.886.2400

[www.scriptlogic.com](http://www.scriptlogic.com)

**Trademark Acknowledgements:**

Secure Copy is a registered trademark of ScriptLogic Corporation in the United States and/or other countries. The names of other companies and products mentioned herein may be the trademarks of their respective owners.

## DOCUMENTATION CONVENTIONS

### Typeface Conventions

**Bold** Indicates a button, menu selection, tab, dialog box title, text to type, selections from drop-down lists, or prompts on a dialog box.

## CONTACTING SCRIPTLOGIC

ScriptLogic may be contacted about any questions, problems or concerns you might have at:



### ScriptLogic Corporation

6000 Broken Sound Parkway NW  
Boca Raton, Florida 33487-2742



561.886.2400 Sales and General Inquiries  
561.886.2450 Technical Support



561.886.2499 Fax



[www.scriptlogic.com](http://www.scriptlogic.com)

## SCRIPTLOGIC ON THE WEB

ScriptLogic can be found on the web at [www.scriptlogic.com](http://www.scriptlogic.com). Our web site offers customers a variety of information:

- Download product updates, patches and/or evaluation products.
- Locate product information and technical details.
- Find out about Product Pricing.
- Search the Knowledge Base for Technical Notes containing an extensive collection of technical articles, troubleshooting tips and white papers.
- Search Frequently Asked Questions, for the answers to the most common non-technical issues.
- Participate in Discussion Forums to discuss problems or ideas with other users and ScriptLogic representatives.

# Contents

**INSTALLING SECURE COPY ..... 1**

    BEFORE YOU BEGIN ..... 1

*Supported Management Platforms* ..... 1

*Minimum System Requirements* ..... 1

*User Privilege Requirements* ..... 1

*Destination Folder* ..... 2

    UPGRADING TO SECURE COPY 6 ..... 2

*Back Up Your Files* ..... 2

    RUNNING THE INSTALLATION WIZARD ..... 3

    STARTING SECURE COPY FOR THE FIRST TIME ..... 5

*Registering Online* ..... 10

*Registering Offline* ..... 12

**TROUBLESHOOTING ..... 16**

# Installing Secure Copy

## BEFORE YOU BEGIN

If you have not yet done so, download the latest version of Secure Copy, which can be found at the following link: <http://www.scriptlogic.com/products/securecopy/>

### Supported Management Platforms

- Windows 2000/XP/2003/Vista/7
- Windows Server 2008
- Windows Server 2008 R2

**Note:** Secure Copy will transfer data between NTFS/FAT16/FAT32 partitions only (security will not be maintained when copying to a FAT partition). Certain NAS appliance manufacturers have devices that are compatible with Secure Copy.

### Minimum System Requirements

- Microsoft .NET Framework 4.0

The remaining minimum requirements are the same as the operating system of the machine on which Secure Copy is installed. Of course, faster processors and more memory will affect the performance of Secure Copy.

### User Privilege Requirements

In order to use Secure Copy, a user must hold administrative rights. These rights are required for the installation and use of the product. Additionally, users must have administrative rights on any servers or workstations that are involved in the copy process.

Secure Copy runs under the context of the logged on user. For full access to all files and folders on the source machine, the user must be a member of the Administrators and Backup Operators groups on the source machine.

In a Windows-to-Windows data copy, the user must only be a member of the Administrators group to effectively grant the user the Backup Operator privileges and enable the **Override Security on Access Denied** feature. However, when copying to or from certain network storage devices such as a NetAPP Filer, the **Override security on Access Denied** option does not function. In this case, it is necessary for the user to be a member of the Backup Operators group on this machine to avoid being denied access to certain files. If there is any question as to whether a machine may not support this option, ensure the user is a member of the Backup Operators group to prevent being denied access to files or folders.

## Destination Folder

Secure Copy needs to be installed on only one machine, which does not need to be the source machine or the target machine. Ideally, install Secure Copy on the source machine, which is most probably retired after the migration is done. The only time it is not recommended is when the source machine is too old to be quick enough or reliable enough for the copy process to be successful.

**Note:** Secure Copy streams RPC commands to the source and target machines as part of the copy process. Having the Secure Copy on a third machine causes numerous network connections to open and thus consume additional resources, which causes a minor latency between Secure Copy and the source and target machines.

**Note:** While some RAM is consumed at the source and target machines; however, the majority of the RAM is consumed on the machine running Secure Copy to build copy jobs. In the process of building copy jobs, Secure Copy generates lists of files that are portioned out among the available threads and batches. Maximizing the available RAM on the machine running Secure Copy allows it to perform tasks without caching to disk because of lack of memory.

## UPGRADING TO SECURE COPY 6

To see what is new in Secure Copy, please see *Secure Copy 6.x Version History* in the ScriptLogic Knowledge Base, which you can access at:

<http://support4.scriptlogic.com/kb/>

## Back Up Your Files

As with all software installations, it is recommended that you back up your files before installing the new software. The simplest way to back up your files is to navigate to the directory on the server where Secure Copy is installed. Press CTRL-A to select all files in this folder. Press CTRL-C to copy the files to the clipboard. Create a new folder and press CTRL-V to paste these files into this new backup folder.

**Important:** If you are upgrading from Secure Copy 4, create a copy of the SecureCopy4.ssd file, and rename it SecureCopy.ssd. After installation, you will move it to the Secure Copy 6 folder.

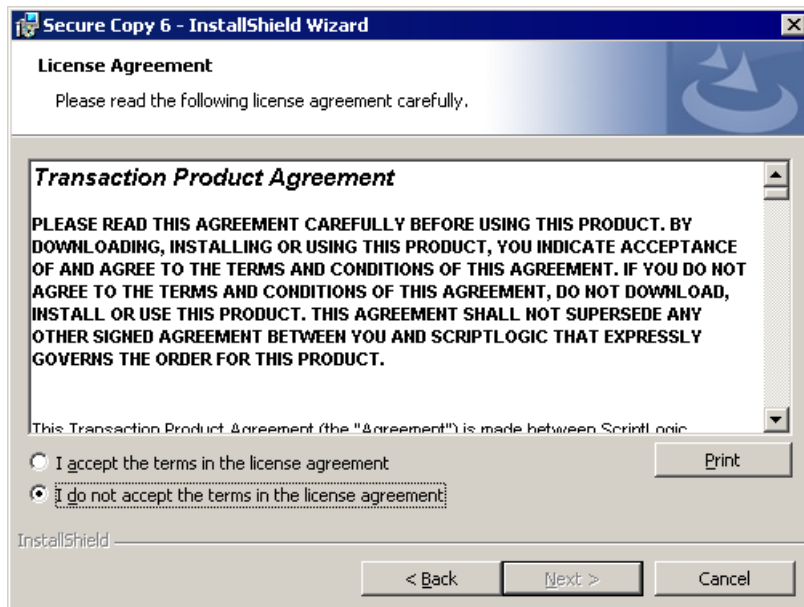
## RUNNING THE INSTALLATION WIZARD

**Note:** At the end of the installation, you may be prompted to restart your computer.

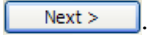
1. After downloading Secure Copy, double-click the .msi file, or right-click the .msi file, and then choose **Install** from the shortcut menu. The **Welcome** box appears.

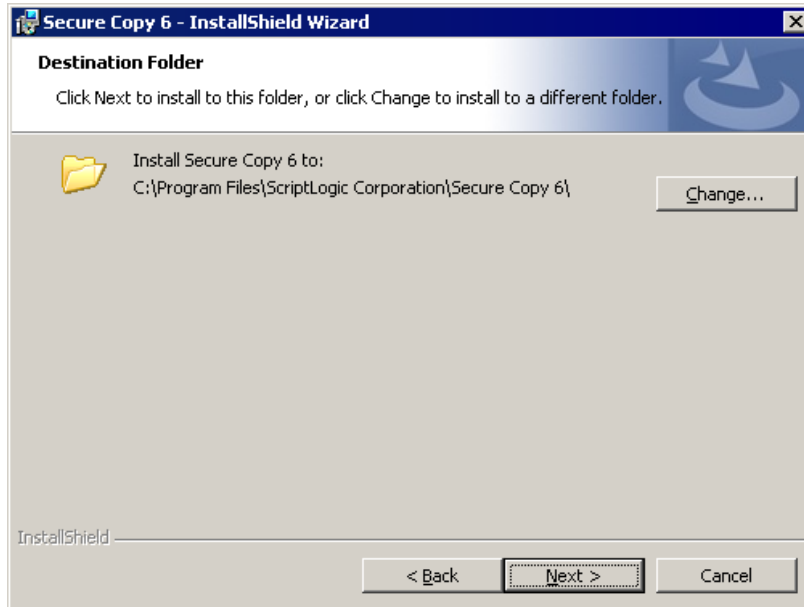


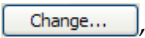
2. Click **Next >**. The **License Agreement** box appears.

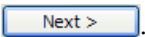


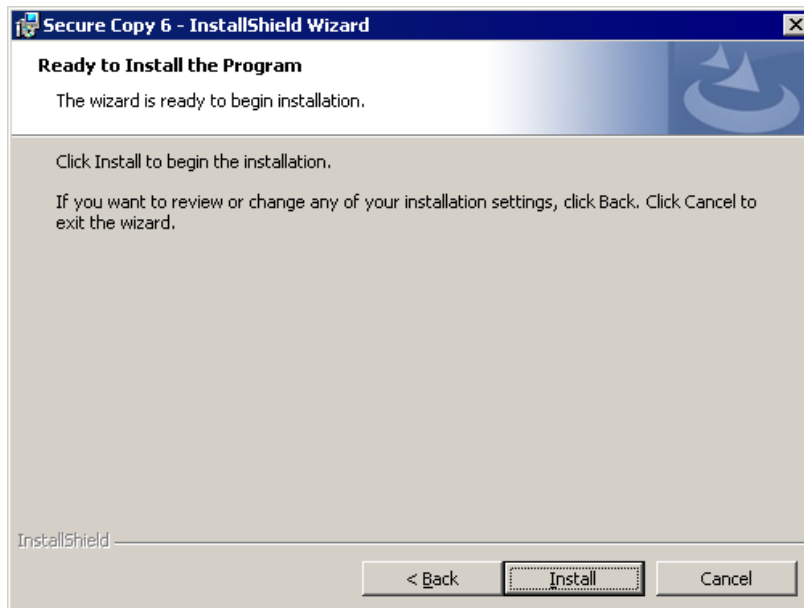
**Note:** You must accept the terms of the license agreement in order to continue with the installation. The software may also be governed by other applicable laws and copyrights not specifically enumerated in the license agreement, or as dictated by supplemental documentation included with the product or at the time of purchase or evaluation.

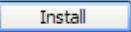
3. Select **I accept the terms in the license agreement**, and then click . The **Destination Folder** box appears.



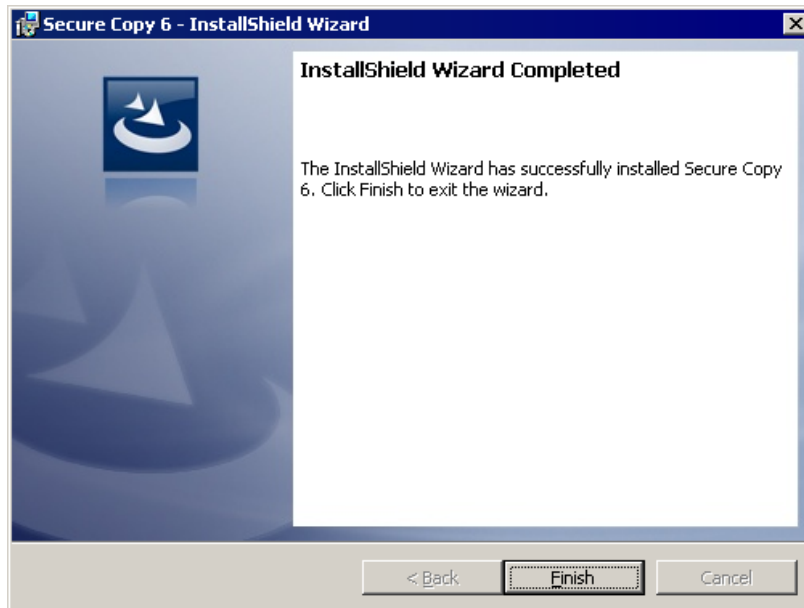
If you want to change the installation destination, click , and then select a new location.

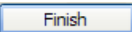
4. Click . The **Ready to Install the Program** box appears.



- To begin the installation, click . The **Installing Secure Copy 6** box displays a status bar dialog that indicates the installation progress.

When the installation is complete, the **InstallShield Wizard Completed** box appears.

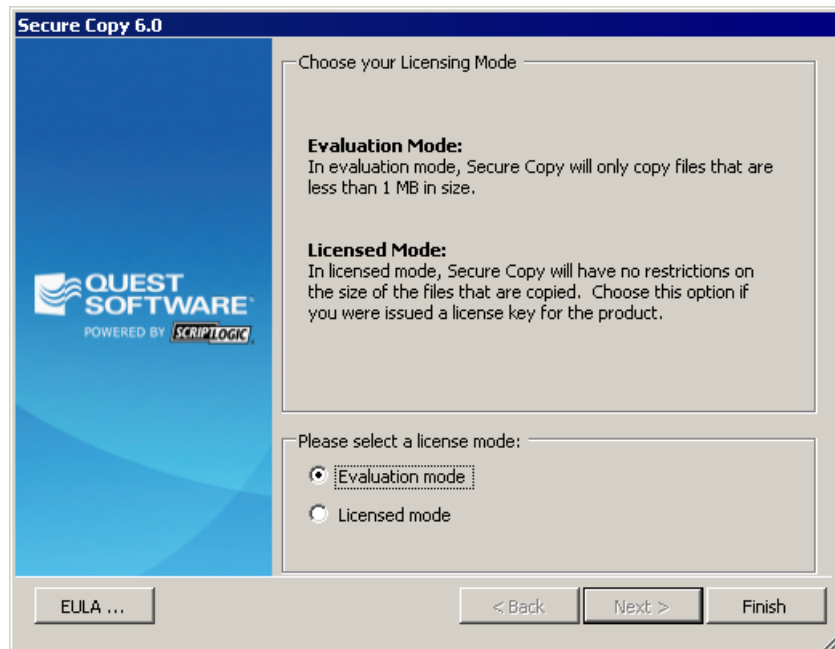



- Click .

## STARTING SECURE COPY FOR THE FIRST TIME

- Click **Start**, point to **Programs > ScriptLogic Corporation > Secure Copy 6**, and then select **Secure Copy 6**.

The first time you start Secure Copy, the **Licensing Mode** page displays.

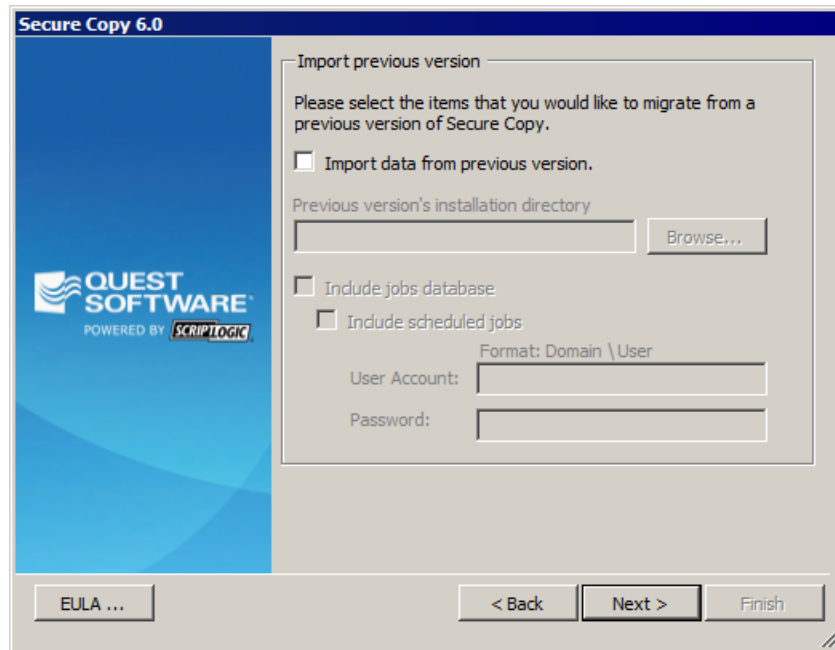


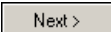
**Note:** At any time during the Product Registration Process, you can click  to view the End User License Agreement.

2. Select whether you want to start Secure Copy in **Evaluation mode** or **Licensed mode**.

**Note:** In Evaluation mode, you can copy only files that are less than 1 MB in size.

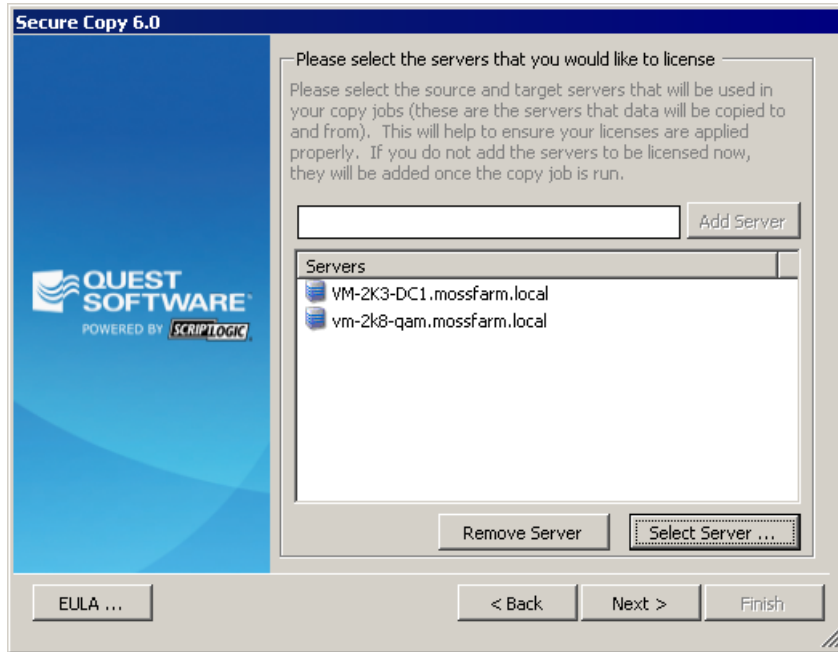
3. Click . If you are upgrading from a previous version of Secure Copy, you can import log files and the jobs database.



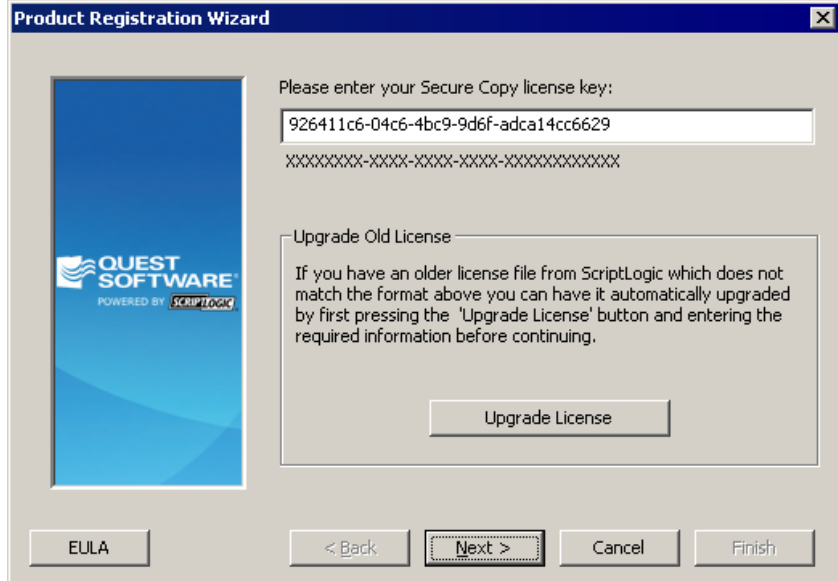
4. If you are upgrading, select the **Import** check box, locate the previous version's installation directory, and then choose to import the **jobs database** and **scheduled jobs**.
5. Click . You are prompted to select the servers you want to license. Add the source and target servers that you want to include in your license list.

**Note:** If you do not add a server now, Secure Copy automatically adds the server when the copy job runs.


- Click **Select Server ...**, and then choose the servers to add to the list. You also can type a server name in the box, and then click **Add Server**.

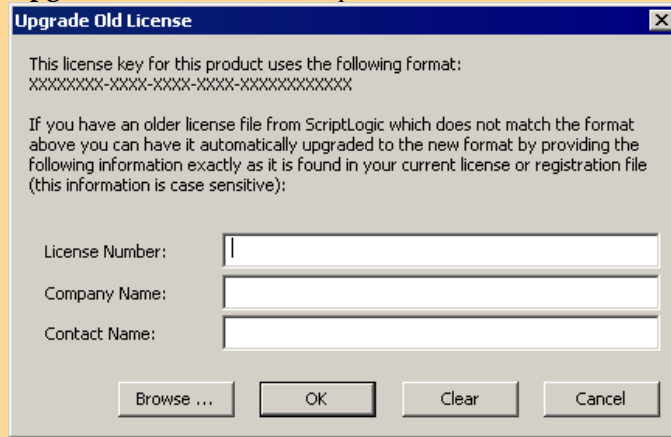



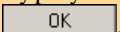
- Click **Next >**.
- In the **Please enter your Secure Copy license key** box, type the license key.



**Note:** If you are upgrading from a previous version, your existing license is not in the necessary format. You must first upgrade your old license.

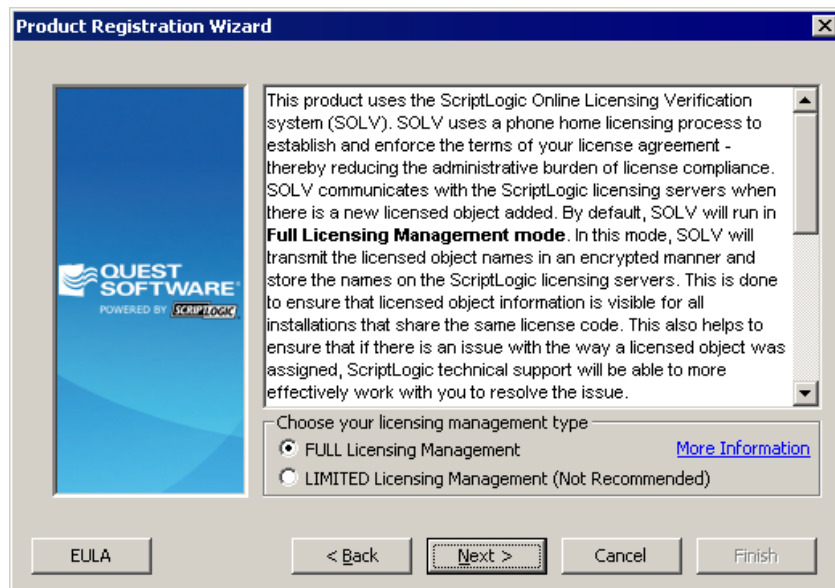
- a. If you are upgrading and have an older license file, click . The **Upgrade Old License** box opens.



- b. Type the license number in the **License Number** box, or click  to locate the license number.
- c. Type your company and contact names in the appropriate boxes, and then click .

9. Click .

10. Select whether to use FULL or LIMITED Licensing Management.



**FULL Licensing Management**

Select to send full licensing information, such as the computer, domain, and administrator names, in an encrypted manner to ScriptLogic. ScriptLogic Customer Support will have access to detailed information about your licenses, and your License Dashboard will show license usage information for all your installations.

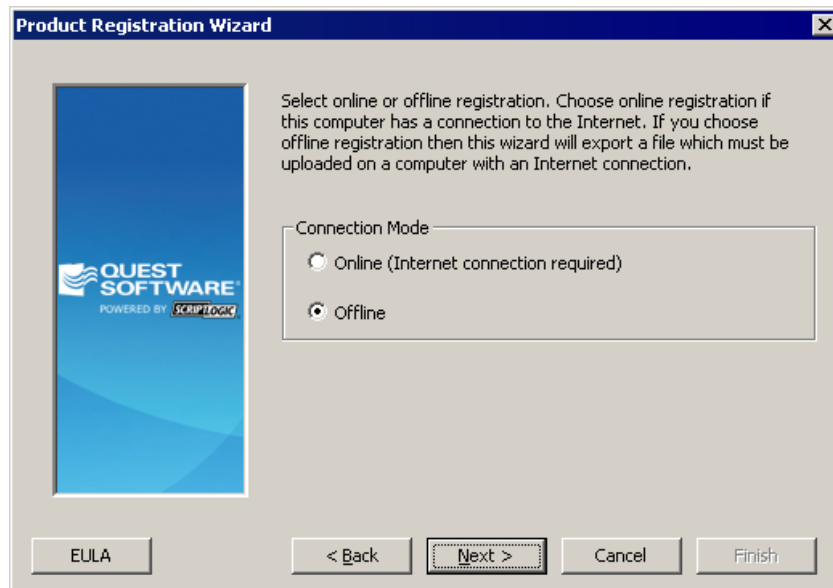
**LIMITED Licensing Management**

Select to send non-identifiable data, much like a password hash, in an encrypted manner to ScriptLogic. ScriptLogic Customer Support will have very limited information about your licenses, and your License Dashboard will show only license usage for the computer on which you are installing this instance of Secure Copy.

**Note:** For more information about ScriptLogic Online Licensing Verification (SOLV), click [More Information](#).

11. Click .

12. Select whether to register online or offline.




**Online (Internet connection required)**

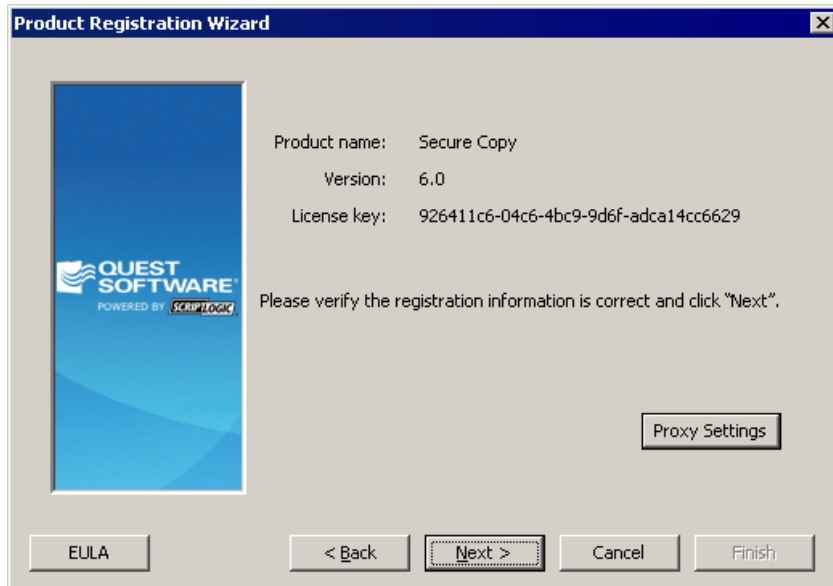
Select to continue with the registration process. The computer must have an Internet connection. See *Registering Online*.

**Offline**

Select to register offline. Only select this option if the computer you are registering does not have an Internet connection. See *Registering Offline*.

## Registering Online

1. Select **Online**, and then click .

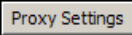


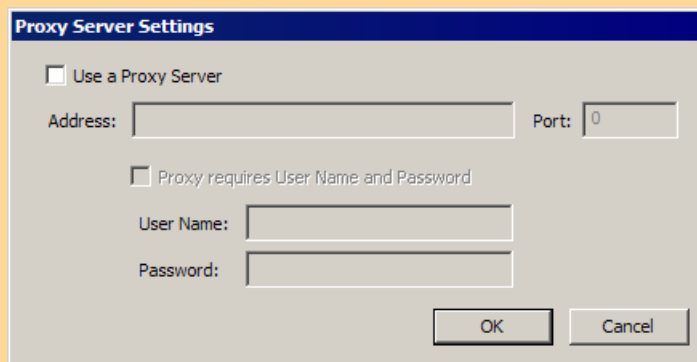
The Product Registration Wizard dialog box displays the following information:

- Product name: Secure Copy
- Version: 6.0
- License key: 926411c6-04c6-4bc9-9d6f-adca14cc6629

Please verify the registration information is correct and click "Next".

Buttons: EULA, < Back, Next > (highlighted), Cancel, Finish, Proxy Settings.

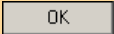
**Note:** To use a Proxy Server, click . The **Proxy Server Settings** box opens.



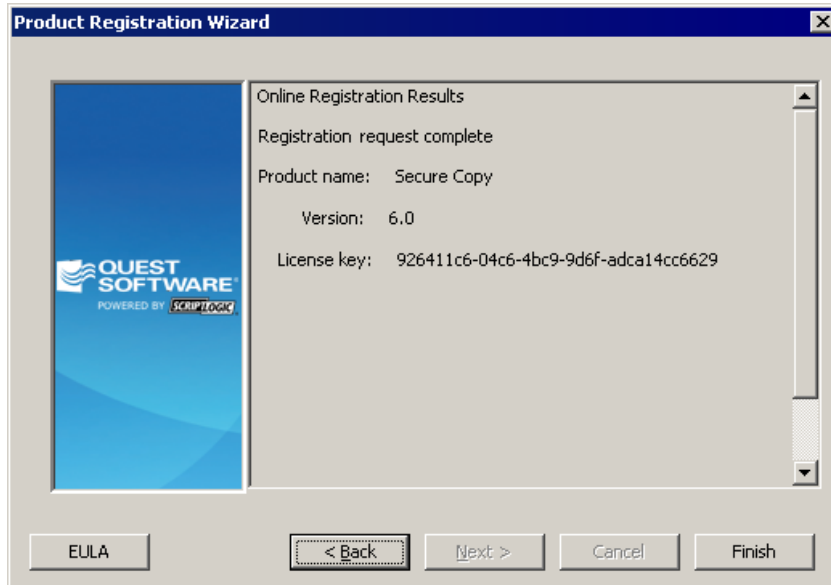
The Proxy Server Settings dialog box contains the following fields and options:

- Use a Proxy Server
- Address:  Port:
- Proxy requires User Name and Password
- User Name:
- Password:

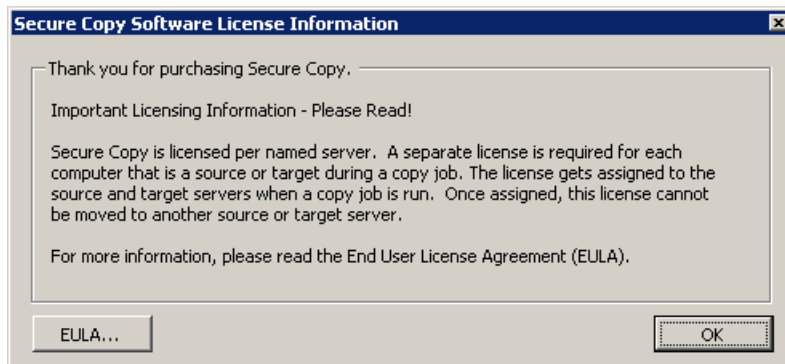
Buttons: OK, Cancel.

Select the **Use a Proxy Server** check box, enter the necessary information, and then click .

- Click **Next >**. If the online registration is successful, a **Registration request complete** message displays.





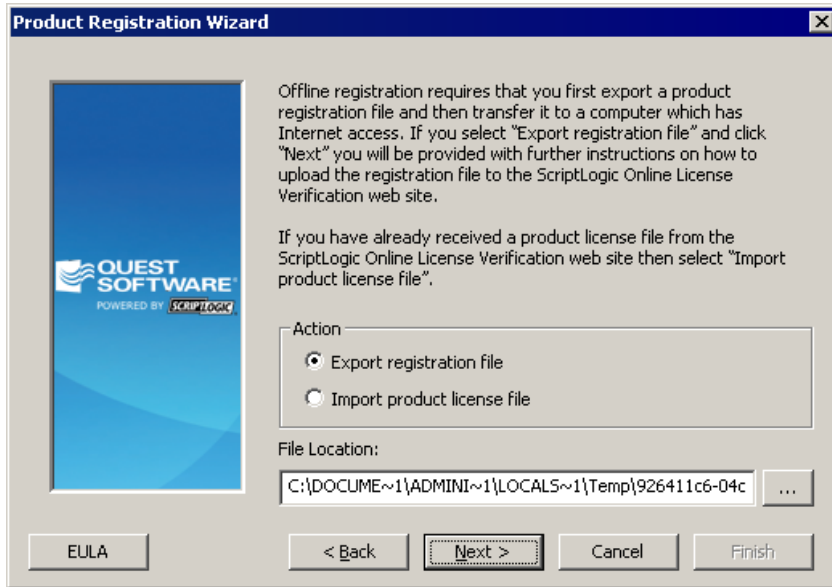
- Click **Finish**. A message box describes licensing information.

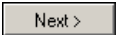


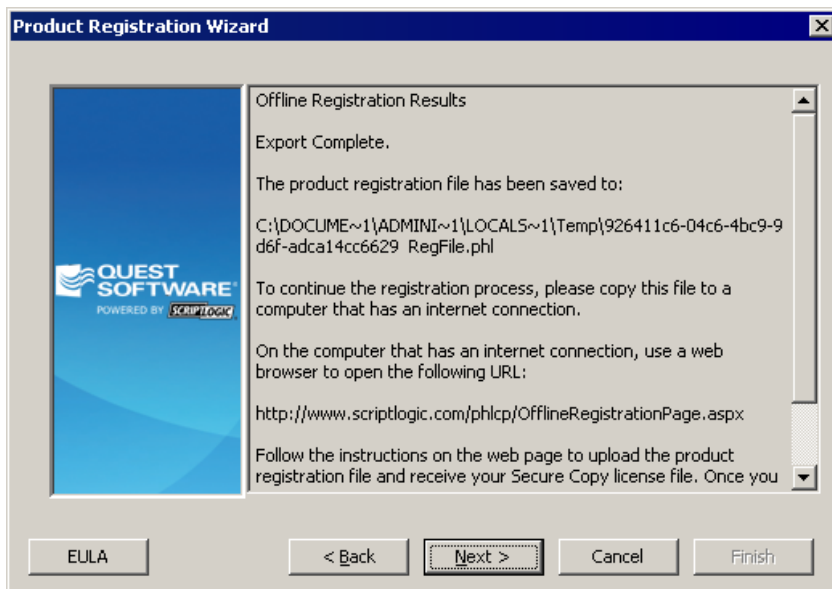
## Registering Offline

If the computer on which you are installing Secure Copy does not have access to the Internet, you can register offline. Export a product registration file (.phl), copy that file to a computer that has Internet access, upload the file to the ScriptLogic web site, download a product license file, and then copy that product license file to the original computer.

1. Select **Offline**, and then click . You first export a registration file.
2. In the **Action** area, select **Export registration file**.
3. Type a path in the **File Location** box, or click  to locate a path.



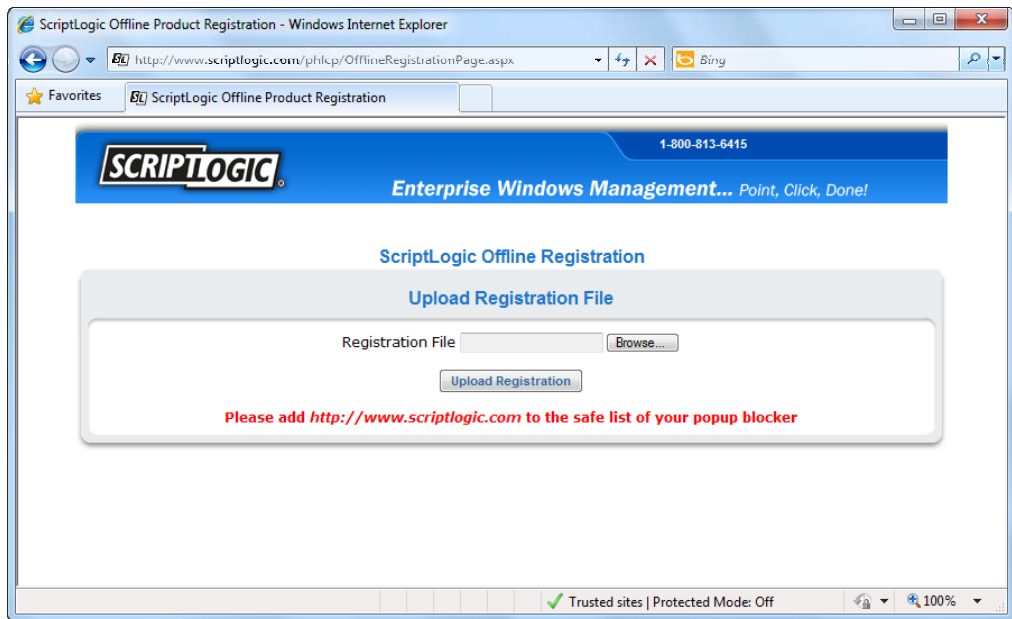
4. Click . The location of the product registration file displays.



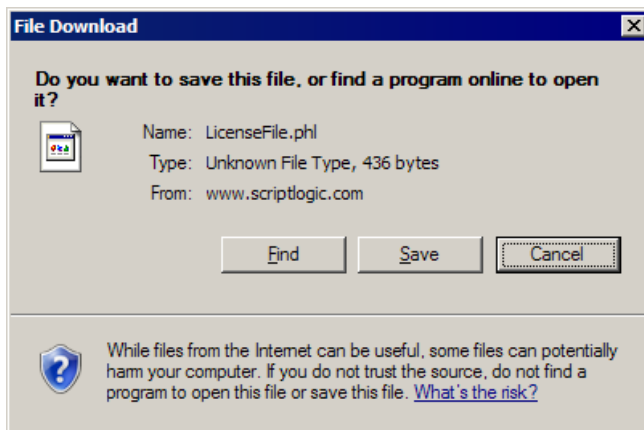
**Note:** Leave this window open while you process the product registration file.

**Note:** If you want to postpone the registration process, click . Functionality might be limited until you import the product license file. When you are ready to complete the registration process, open Secure Copy, open the **Help** menu, and then choose **License**.


5. Copy the product registration file to a computer that has an Internet connection.
6. On the computer that has an Internet connection, open the following URL:  
<http://www.scriptlogic.com/phlcp/OfflineRegistrationPage.aspx>

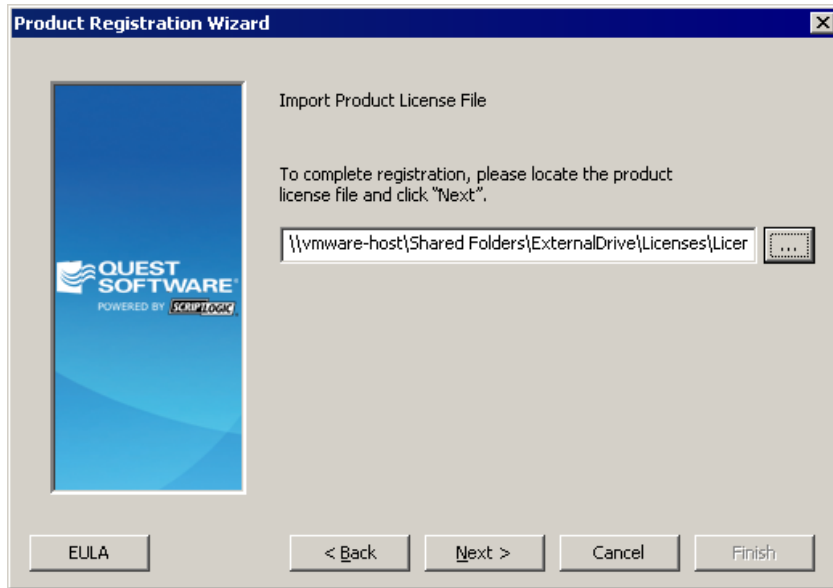



7. Type the path to the product registration file, or click  to locate the file.
8. Click . The **File Download** box opens.

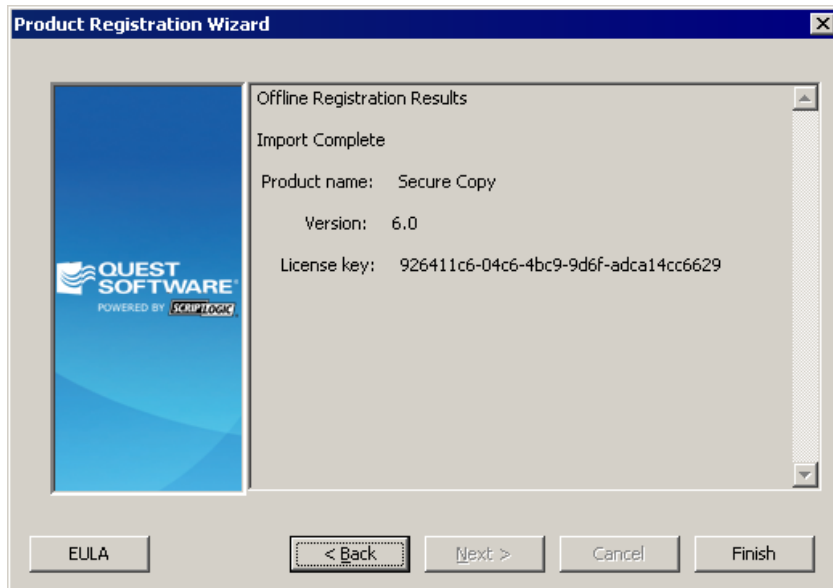


9. Click  to save the LicenseFile.phl file.
10. Copy the LicenseFile.phl file to the computer that you are registering.
11. Click . The **Import Product License File** window opens.

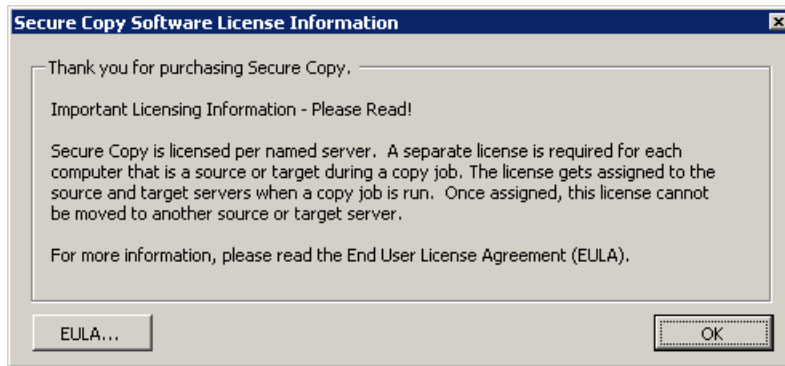
12. Type the path to the product license file (.phl), or click  to locate the file.



13. Click . If the offline registration is successful, a **Registration request complete** message displays.



14. Click . A message box describes licensing information.



# Troubleshooting

ScriptLogic Corporation has a library of articles in its Knowledge Base, which may provide an answer to a problem you are experiencing. Before calling technical support, check to see if your problem is documented here. You might also browse the Discussion Forums to see if anyone else is experiencing the same issue.

<http://www.scriptlogic.com/support/products/securecopy/>