

# File System Auditor Release Notes

## WHAT'S NEW IN FILE SYSTEM AUDITOR?

To see what is new in File System Auditor, please see article *Q14974 - INFO: File System Auditor 2.x Version History* in the ScriptLogic Knowledge Base, which you can access at: <http://support4.scriptlogic.com/kb/>

**Important:** This document is intended for users who are upgrading an existing installation of File System Auditor. If you are installing File System Auditor for the first time, please use the *File System Auditor Getting Started Guide*.

## MINIMUM SYSTEM REQUIREMENTS

- Intel®Pentium® III or higher processor
- 512 MB RAM
- 50 MB free hard disk space for installation
- 100 MB free hard disk space for the database

## Supported Management Platforms

### Agent Configuration and Report Configuration Consoles

**Note:** Microsoft .NET Framework 2 is required on the Agent Configuration and Report Configuration Consoles.

- Windows 2000 SP4 with Update Rollup 1: Professional, Server
- Windows XP Professional with SP2
- Windows Server™ 2003 Family with SP1
- Windows Vista
- Windows Server 2008 Family including R2
- Windows 7

### Agent

- Windows Server 2000 SP4 with Update Rollup 1
- Windows Server 2003 family with SP1
- Windows Server 2008 Family, including R2 and Server Core

## Export Requirements

- Microsoft SQL Server 2000, Microsoft SQL Server 2005, Microsoft SQL Server 2008, Microsoft SQL Server 2008 R2, and Data Access Components (MDAC) 2.7

## Support for iSCSI disks

File System Auditor 2 is supported on iSCSI target disks using Microsoft iSCSI Software Initiator Version 2.06 (build 3497). If you are using an earlier version of this software and are experiencing issues auditing an iSCSI target disk with File System Auditor 2, upgrade to the latest version of the Microsoft iSCSI Software Initiator, which you can find at the Microsoft Download Center: <http://www.microsoft.com/downloads/>

## BEFORE YOU BEGIN

Download the latest version of the File System Auditor program from the ScriptLogic Web site: <http://www.scriptlogic.com/support>

## User Privilege Requirements

To install and configure File System Auditor, a user must hold administrative rights.

## UPGRADING FILE SYSTEM AUDITOR

### Back Up Your Files

As with all software installations, it is recommended that you back up your files before installing the new software. The simplest way to back up your files is to navigate to the directory on the server where File Server Auditor is installed. Press CTRL-A to select all files in this folder. Press CTRL-C to copy the files to the clipboard. Create a new folder and press CTRL-V to paste these files into this new backup folder.

### Uninstall Previous Version

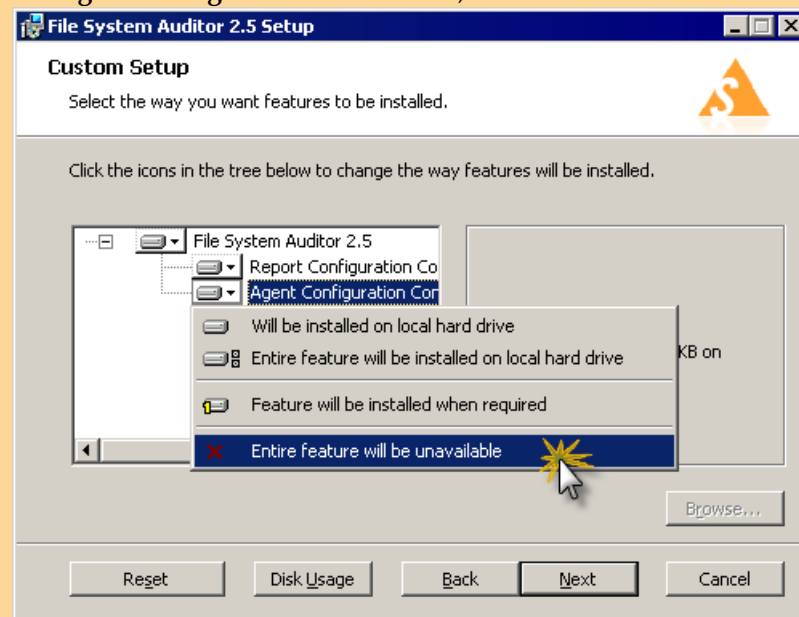
**Important:** You must uninstall version 1.x of File System Auditor before installing version 2.5. Your existing databases are incorporated into version 2.5.



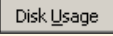
## INSTALLING FILE SYSTEM AUDITOR

During the install process, you can choose to install the Agent Configuration Console and/or the Report Configuration Console. After the Agent Configuration Console is installed, you can remotely install the File System Auditor Agent on those computers you want to audit. Install the Report Configuration Console on those computers whose users need to generate reports.

1. Double-click the **FSASetup.msi** file. The **Welcome** page opens.
2. Click **Next**. The **License Agreement** page opens.
3. Select the **I accept the terms in the License Agreement** check box, and then click **Next**. The **Custom Setup** page opens.

**Note:** By default, both the Agent Configuration Console and the Report Configuration Console are installed. If you want to install just the Report Configuration Console, open the **Agent Configuration Console** list, and choose **Entire feature will be unavailable**.



To:	Click:
Return the selections to the default	
Change the location of the program files	 The <b>Change Current Destination Folder</b> page opens. Choose a new location for the installation directory.
See if there is enough space to install the programs	 The <b>Disk Requirements</b> page shows the disk space available on the drive displayed in the <b>Install to</b> area.

4. Click **Next**. The **Ready to install** page opens.
5. Click **Next**. The installation process begins. When the process is complete, the **Completed** page opens.
6. Click **Finish**.

## STARTING FILE SYSTEM AUDITOR

- ▶ Click **Start**, point to **Programs** ▶ **ScriptLogic Corporation** ▶ **File System Auditor 2**, and then select one of the following options:

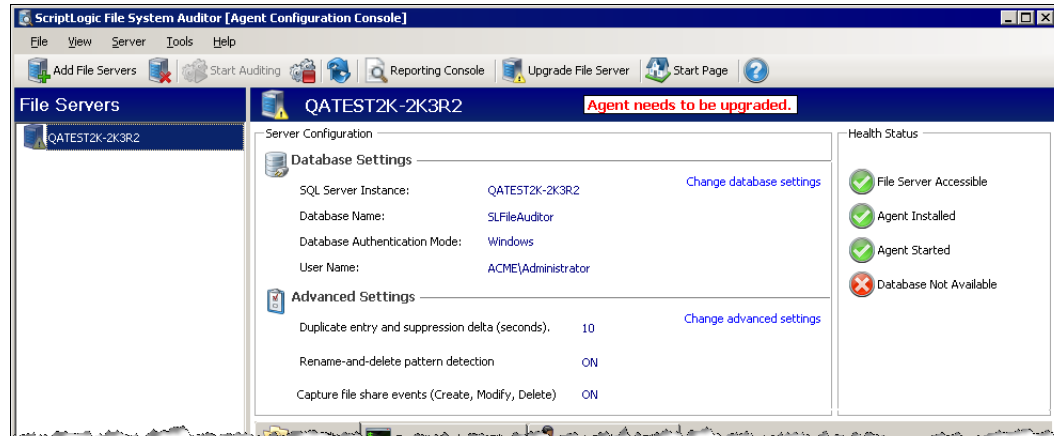
Option	Description
Agent Configuration Console	Configure File System Auditor for data collection. See <i>Configuring File System Auditor</i> .
Database Wizard	Create and manage the auditing database[s]. See <i>Managing the Audit Database</i> .
FSA Getting Started Guide (PDF)	Opens the installation and configuration document for the Agent Configuration Console.
FSA User Guide (PDF)	Opens the user guide for the Report Configuration Console.
Report Configuration Console	Filter and report on data in the auditing database. See the <i>File System Auditor Report Configuration User Guide</i> .
Real Time Viewer	View data in the audit database in real-time. See <b>Error! Reference source not found.</b>

Each time you run File System Auditor or File System Audit Reporter, you will be greeted by the splash screen, which displays the initialization of the program and the version number.

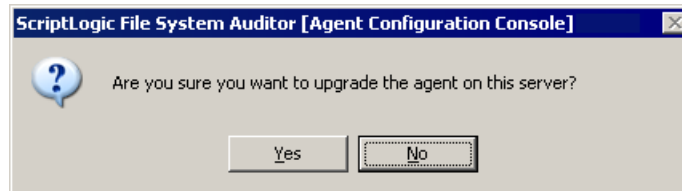
## UPGRADING THE AUDIT AGENT

If you are updating from a previous version, you need to upgrade the Audit Agent following the installation of the latest version of File System Auditor.

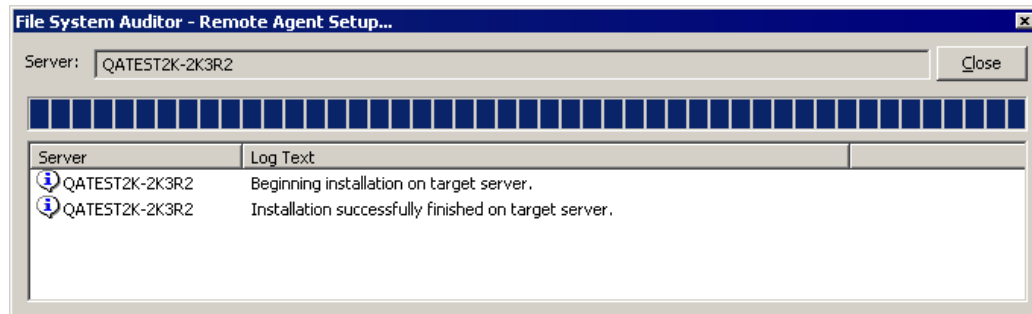
After starting File System Auditor, you see your file servers listed with a notice that the Agent needs to be upgraded.



1. Select the file server, and then click . A warning message displays.



2. To upgrade the agent, click Yes.



3. Click Close.

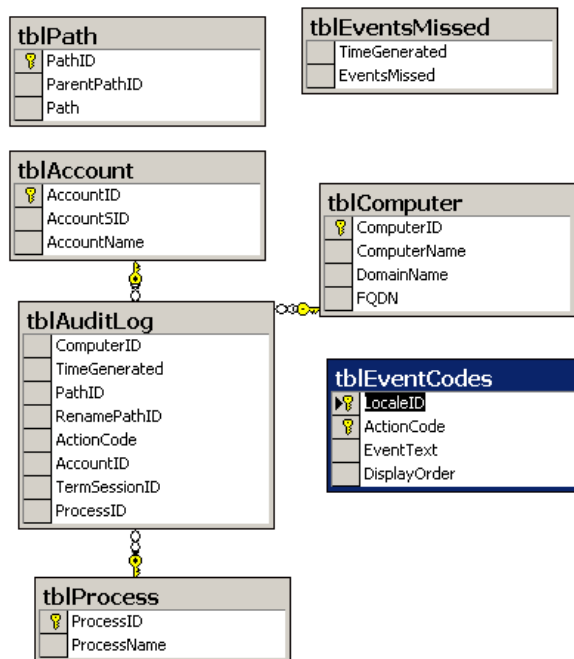
## TROUBLESHOOTING

In its Knowledge Base, ScriptLogic Corporation has a library of articles that may provide an answer to a problem you are experiencing. Before calling technical support, check to see if your problem is documented here. You might also browse the Discussion Forums to see if anyone else is experiencing the same issue.

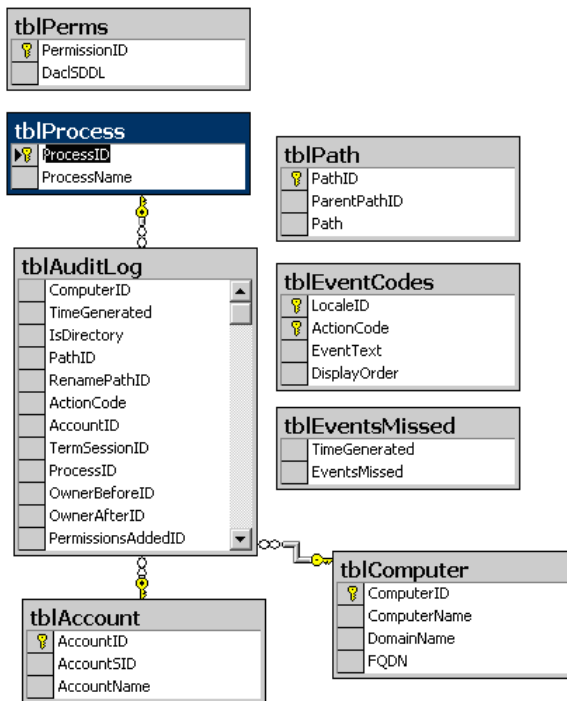
<http://www.scriptlogic.com/support>

## AUDIT DATABASE SCHEMA COMPARISON

### Version 1.5



## Version 2



## VERSION 2 STORED PROCEDURES

The three additional stored procedures in version 2 are highlighted in **blue text**.

Name	Owner	Type	Create Date
CleanUpTables	dbo	User	3/21/2007 11:05
DeleteFullPath	dbo	User	3/21/2007 11:05
dt_addtosourcecontrol	dbo	System	3/21/2007 11:26
dt_addtosourcecontrol_u	dbo	System	3/21/2007 11:26
dt_adduserobject	dbo	System	3/21/2007 11:26
dt_adduserobject_vcs	dbo	System	3/21/2007 11:26
dt_checkinobject	dbo	System	3/21/2007 11:26
dt_checkinobject_u	dbo	System	3/21/2007 11:26
dt_checkoutobject	dbo	System	3/21/2007 11:26
dt_checkoutobject_u	dbo	System	3/21/2007 11:26
dt_displayoerror	dbo	System	3/21/2007 11:26
dt_displayoerror_u	dbo	System	3/21/2007 11:26

Name	Owner	Type	Create Date
dt_droppropertiesbyid	dbo	System	3/21/2007 11:26
dt_dropuserobjectbyid	dbo	System	3/21/2007 11:26
dt_generateansiname	dbo	System	3/21/2007 11:26
dt_getobjwithprop	dbo	System	3/21/2007 11:26
dt_getobjwithprop_u	dbo	System	3/21/2007 11:26
dt_getpropertiesbyid	dbo	System	3/21/2007 11:26
dt_getpropertiesbyid_u	dbo	System	3/21/2007 11:26
dt_getpropertiesbyid_vcs	dbo	System	3/21/2007 11:26
dt_getpropertiesbyid_vcs_u	dbo	System	3/21/2007 11:26
dt_isundersourcecontrol	dbo	System	3/21/2007 11:26
dt_isundersourcecontrol_u	dbo	System	3/21/2007 11:26
dt_removefromsourcecontrol	dbo	System	3/21/2007 11:26
dt_setpropertybyid	dbo	System	3/21/2007 11:26
dt_setpropertybyid_u	dbo	System	3/21/2007 11:26
dt_validateloginparams	dbo	System	3/21/2007 11:26
dt_validateloginparams_u	dbo	System	3/21/2007 11:26
dt_vcsenabled	dbo	System	3/21/2007 11:26
dt_verstamp006	dbo	System	3/21/2007 11:26
dt_verstamp007	dbo	System	3/21/2007 11:26
dt_whocheckedout	dbo	System	3/21/2007 11:26
dt_whocheckedout_u	dbo	System	3/21/2007 11:26
GetAccountID	dbo	User	3/21/2007 11:05
GetComputerID	dbo	User	3/21/2007 11:05
GetPathID	dbo	User	3/21/2007 11:05
GetPathIDEx	dbo	User	3/21/2007 11:05
<b>GetPermissionID</b>	<b>dbo</b>	<b>User</b>	<b>3/21/2007 11:05</b>
GetProcessID	dbo	User	3/21/2007 11:05
InsertEntry	dbo	User	3/21/2007 11:05
<b>InsertEntry2</b>	<b>dbo</b>	<b>User</b>	<b>3/21/2007 11:05</b>
PopulateEventNames	dbo	User	3/21/2007 11:05
PurgeDataByDate	dbo	User	3/21/2007 11:05

Name	Owner	Type	Create Date
Update1	dbo	User	3/21/2007 11:05
<b>Update2</b>	<b>dbo</b>	<b>User</b>	<b>3/21/2007 11:05</b>

## CONTACTING SCRIPTLOGIC

ScriptLogic may be contacted about any questions, problems or concerns you might have at:



**ScriptLogic Corporation**

6000 Broken Sound Parkway NW  
Boca Raton, Florida 33487-2742



561.886.2400 Sales and General Inquiries  
561.886.2450 Technical Support



561.886.2499 Fax



[www.scriptlogic.com](http://www.scriptlogic.com)

## SCRIPTLOGIC ON THE WEB

ScriptLogic can be found on the web at [www.scriptlogic.com](http://www.scriptlogic.com). Our web site offers customers a variety of information:

- Download product updates, patches and/or fully functional 45-day evaluation products.
- Locate product information and technical details.
- Find out about Product Pricing.
- Search the Knowledge Base for Technical Notes containing an extensive collection of technical articles, troubleshooting tips and white papers.
- Search Frequently Asked Questions, for the answers to the most common non-technical issues.
- Participate in Discussion Forums to discuss problems or ideas with other users and ScriptLogic representatives.