

# Enterprise Security Reporter®

## What's New Guide

---

### Enterprise Security Reporter 3.8

© 2010 ScriptLogic Corporation  
ALL RIGHTS RESERVED.

*ScriptLogic, the ScriptLogic logo and Point,Click,Done! are trademarks and registered trademarks of ScriptLogic Corporation in the United States of America and other countries. All other trademarks and registered trademarks are property of their respective owners.*

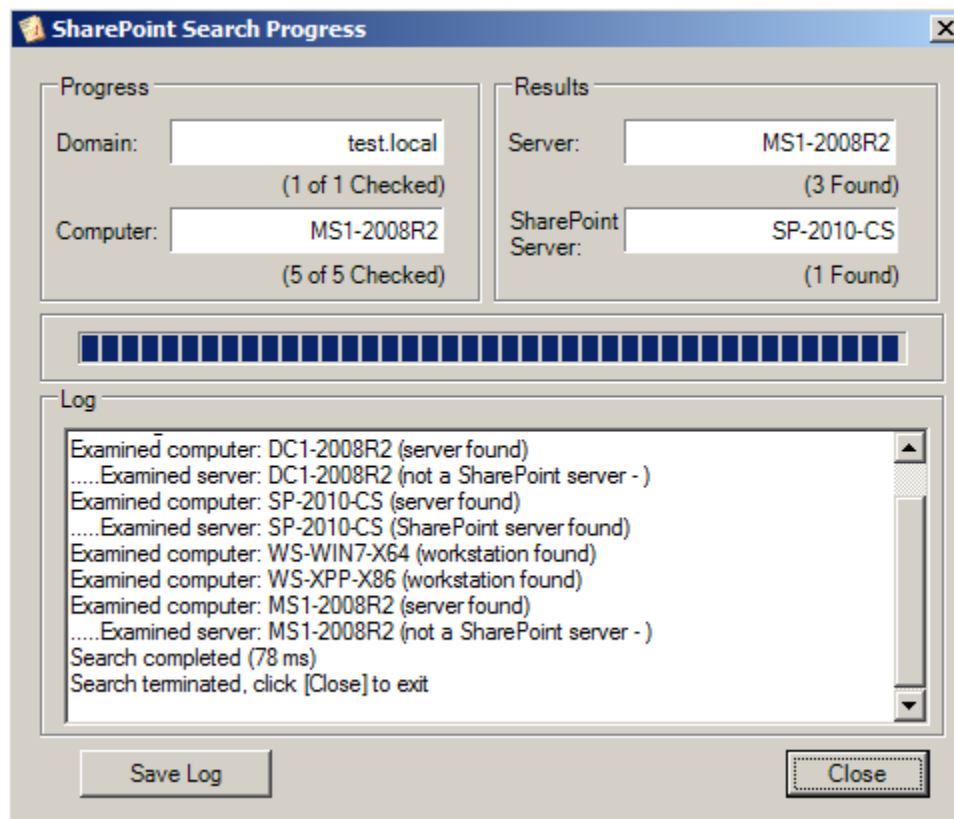
**Enterprise Security Reporter** is a powerful, agent-less reporting solution used for auditing, analyzing and reporting on security in Active Directory, Windows file servers, SharePoint and SQL Servers across the enterprise. Compliance assessments and security reviews are easily performed with predefined and customizable reporting tools. Administrators can analyze file security, group memberships, permissions, and other network security settings to demonstrate compliance with internal/external regulations and examine who has access to what, and what permissions have been changed.

## New Feature Highlights for Version 3.8

### NEW! Discover SharePoint servers running on your network

The first step to reporting on SharePoint security is to make sure all of your SharePoint servers and sites are found and cataloged. Enterprise Security Reporter (ESR) now provides the ability to scan all computers on a domain to highlight those that are running SharePoint. These computers are then automatically added to the ESR Discovery Console where they can be configured for ad-hoc or scheduled discoveries.

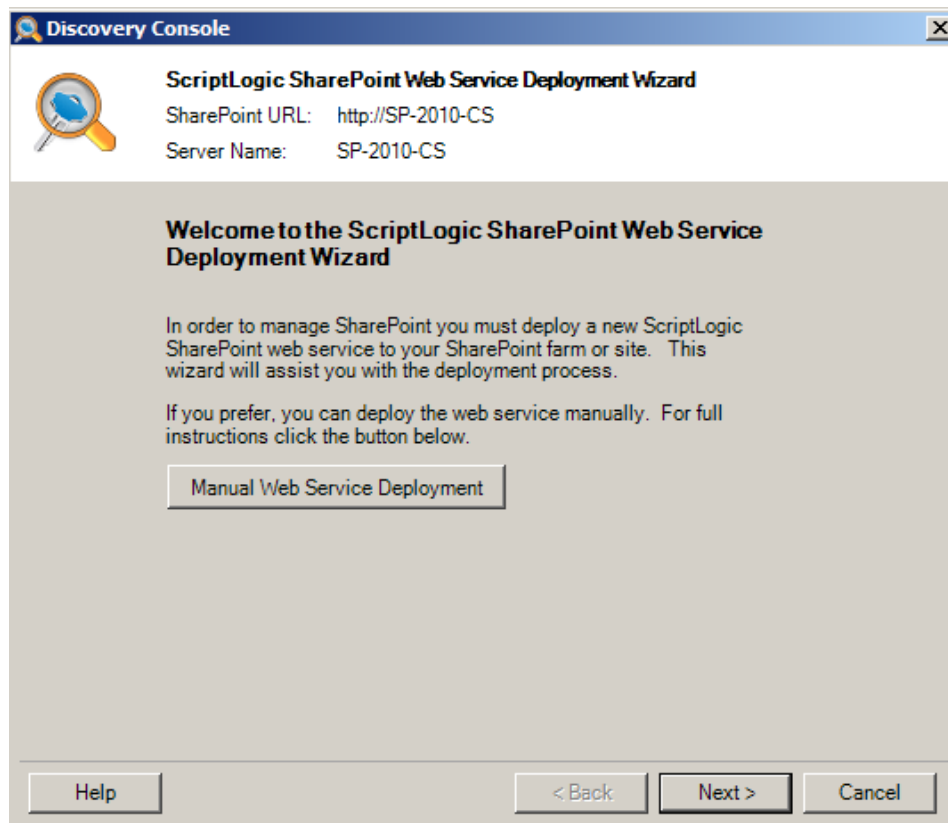
- Scans entire network to find all instances of SharePoint
- Automatically imports SharePoint servers into ESR Discovery Console
- Highlights unknown instances of SharePoint running on the network



## NEW! SharePoint Web Service Deployment Wizard

The new SharePoint Web Service Deployment Wizard significantly simplifies the task of deploying the necessary SharePoint discovery web service to the web front end servers in the farm. In previous versions, the web service had to be deployed to each web front end server individually before they could be discovered. With the new deployment wizard, Enterprise Security Reporter automatically deploys the web service to all the web front end servers in the farm.

- Eliminates the need to deploy the required web service individually to each web front end server
- Ensures that the web service is up to date across the entire farm
- Simplifies the deployment and ongoing management of the SharePoint web service

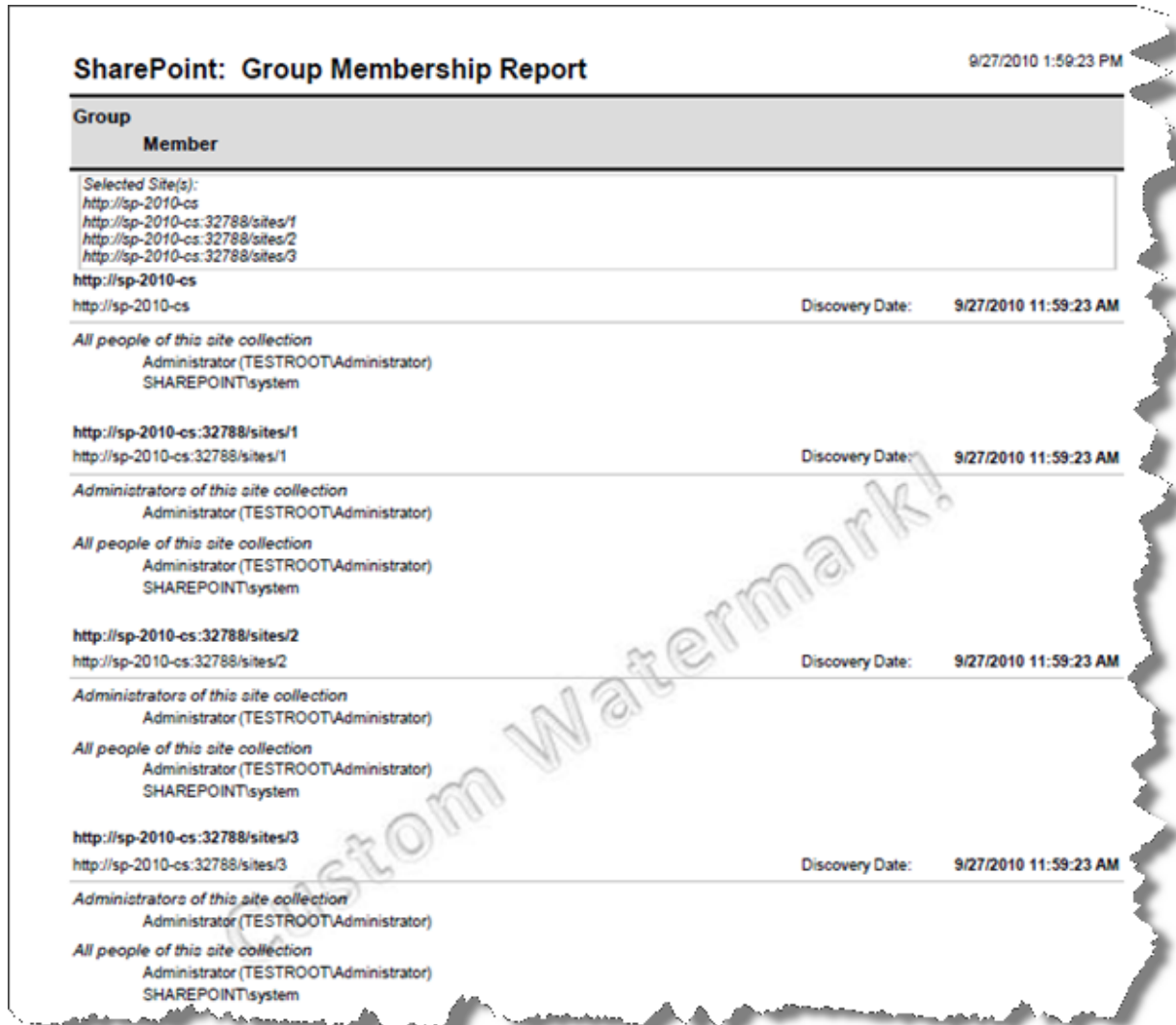


## NEW! Platform Support

ESR 3.8 now fully supports discovering and reporting on **SharePoint Server 2010** and **SharePoint Foundation 2010**. ESR now also supports discovering and reporting on, as well as configuration of the ESR Discovery and Reporting databases on **SQL Server 2008 R2** and **SQL Server 2008 R2 Express Edition**.

## Enhanced! Report on Site Collection Administrators

The site collection administrator role grants a user full rights to all sites within a site collection. These users are now displayed in the SharePoint group membership reports in ESR. This gives you the ability to centrally report on all site collection administrators across the SharePoint farm.



**SharePoint: Group Membership Report** 9/27/2010 1:59:23 PM

Group	Member
<b>Selected Site(s):</b> <a href="http://sp-2010-cs">http://sp-2010-cs</a> <a href="http://sp-2010-cs:32788/sites/1">http://sp-2010-cs:32788/sites/1</a> <a href="http://sp-2010-cs:32788/sites/2">http://sp-2010-cs:32788/sites/2</a> <a href="http://sp-2010-cs:32788/sites/3">http://sp-2010-cs:32788/sites/3</a>	
<b>http://sp-2010-cs</b> http://sp-2010-cs	Discovery Date: 9/27/2010 11:59:23 AM
<i>All people of this site collection</i> Administrator (TESTROOT\Administrator) SHAREPOINT\system	
<b>http://sp-2010-cs:32788/sites/1</b> http://sp-2010-cs:32788/sites/1	Discovery Date: 9/27/2010 11:59:23 AM
<i>Administrators of this site collection</i> Administrator (TESTROOT\Administrator)	
<i>All people of this site collection</i> Administrator (TESTROOT\Administrator) SHAREPOINT\system	
<b>http://sp-2010-cs:32788/sites/2</b> http://sp-2010-cs:32788/sites/2	Discovery Date: 9/27/2010 11:59:23 AM
<i>Administrators of this site collection</i> Administrator (TESTROOT\Administrator)	
<i>All people of this site collection</i> Administrator (TESTROOT\Administrator) SHAREPOINT\system	
<b>http://sp-2010-cs:32788/sites/3</b> http://sp-2010-cs:32788/sites/3	Discovery Date: 9/27/2010 11:59:23 AM
<i>Administrators of this site collection</i> Administrator (TESTROOT\Administrator)	
<i>All people of this site collection</i> Administrator (TESTROOT\Administrator) SHAREPOINT\system	

## NEW! Custom Watermarks

Define and display your own watermarks on any report. With this feature, you can display a document's status as draft or internal distribution only for example.

## SharePoint: Site Document List

9/27/2010 1:55:23 PM

Document Path	Date Created	Date Modified	Author
<i>Selected Site(s):</i> <a href="http://sp-2010-cs:81">http://sp-2010-cs:81</a> <a href="http://sp-2010-cs:81/sites/1">http://sp-2010-cs:81/sites/1</a> <a href="http://sp-2010-cs:81/sites/2">http://sp-2010-cs:81/sites/2</a> <a href="http://sp-2010-cs:81/sites/3">http://sp-2010-cs:81/sites/3</a> <a href="http://sp-2010-cs:81/sites/4">http://sp-2010-cs:81/sites/4</a> <a href="http://sp-2010-cs:81/sites/5">http://sp-2010-cs:81/sites/5</a>			
<a href="http://sp-2010-cs:81">http://sp-2010-cs:81</a>			Discovery Date: 9/27/2010 11:59:23 AM
<i>Announcements/1_000</i>			
	9/22/2010 12:42:24 PM	9/22/2010 12:42:24 PM	System Account
<i>Master Page Gallery/AdvancedSearchLayout.aspx</i>			
	9/22/2010 12:41:41 PM	9/22/2010 12:41:41 PM	System Account
<i>Master Page Gallery/default.master</i>			
	9/22/2010 12:40:15 PM	9/22/2010 12:40:15 PM	System Account
<i>Master Page Gallery/DefaultLayout.aspx</i>			
	9/22/2010 12:41:27 PM	9/22/2010 12:41:27 PM	System Account
<i>Master Page Gallery/minimal.master</i>			
	9/22/2010 12:40:44 PM	9/22/2010 12:40:44 PM	System Account
<i>Master Page Gallery/NewsHomeLayout.aspx</i>			
	9/22/2010 12:41:30 PM	9/22/2010 12:41:30 PM	System Account
<i>Master Page Gallery/PeopleSearchResults.aspx</i>			
	9/22/2010 12:41:49 PM	9/22/2010 12:41:49 PM	System Account
<i>Master Page Gallery/Preview Images/advancedsearch.gif</i>			
	9/22/2010 12:42:02 PM	9/22/2010 12:42:02 PM	System Account
<i>Master Page Gallery/Preview Images/advancedsearch.png</i>			
	9/22/2010 12:42:02 PM	9/22/2010 12:42:02 PM	System Account
<i>Master Page Gallery/Preview Image/peoplesearchpage.gif</i>			
	9/22/2010 12:42:02 PM	9/22/2010 12:42:02 PM	System Account
<i>Master Page Gallery/Preview Images/peoplesearchpage.png</i>			
	9/22/2010 12:42:02 PM	9/22/2010 12:42:02 PM	System Account
<i>Master Page Gallery/Preview Images/searchpage.gif</i>			
	9/22/2010 12:42:02 PM	9/22/2010 12:42:02 PM	System Account
<i>Master Page Gallery/Preview Images/searchpage.png</i>			
	9/22/2010 12:42:02 PM	9/22/2010 12:42:02 PM	System Account
<i>Master Page Gallery/Preview Images/searchresults.gif</i>			
	9/22/2010 12:42:02 PM	9/22/2010 12:42:02 PM	System Account
<i>Master Page Gallery/Preview Images/searchresults.png</i>			
	9/22/2010 12:42:02 PM	9/22/2010 12:42:02 PM	System Account

## NEW! Customer Feedback Link

We value customer input as it helps make ScriptLogic products better so we are making it easier for you to get your feedback to us. The new *Customer Feedback* link from the Help menu will direct you to a web page where you can make product suggestions, send comments, and request information. Now you can easily provide product feedback without ever leaving the application!

## Summary

Enterprise Security Reporter 3.8 provides significant improvements to the SharePoint discovery and reporting capabilities. This release also adds new platform support with **SharePoint 2010** and **SQL Server 2008 R2** and custom watermark support which can be used to tag the status of reports.

For more information, please visit -

<http://www.scriptlogic.com/Products/EnterpriseSecurityReporter/windows/>