

Profile_LegalNotice

PK	ElementID	int
FK1	ProfileID	int
	Priority	int
	Title	ntext
	Text	ntext
	Enabled	bit
	Rules	ntext
	Class	nvarchar(64)
	OS	nvarchar(255)
	ConnectionType	nvarchar(64)
	Timing	nvarchar(255)
	Description	nvarchar(255)
	CreatedBySID	nvarchar(100)
	LastModifiedBySID	nvarchar(100)
	LastModifiedDate	datetime
	ElementEnabled	nvarchar(20)

Profile_Environment

PK	ElementID	int
FK1	ProfileID	int
	Priority	int
	Title	ntext
	Variable	nvarchar(1000)
	Location	nvarchar(255)
	ElementEnabled	nvarchar(20)
	Enabled	bit
	Rules	ntext
	Class	nvarchar(64)
	OS	nvarchar(255)
	ConnectionType	nvarchar(64)
	Timing	nvarchar(255)
	Description	nvarchar(255)
	CreatedBySID	nvarchar(100)
	LastModifiedBySID	nvarchar(100)
	LastModifiedDate	datetime

Profile_MessageBoxes

PK	ElementID	int
FK1	ProfileID	int
	Priority	int
	Title	ntext
	Timeout	nvarchar(64)
	Cycle	nvarchar(64)
	CycleData	nvarchar(64)
	Frequency	nvarchar(64)
	UUID	nvarchar(64)
	Enabled	bit
	Rules	ntext
	Class	nvarchar(64)
	OS	nvarchar(255)
	ConnectionType	nvarchar(64)
	Timing	nvarchar(255)
	Description	nvarchar(255)
	CreatedBySID	nvarchar(100)
	LastModifiedBySID	nvarchar(100)
	LastModifiedDate	datetime
	ElementEnabled	nvarchar(20)

Profile_CommonFolderRedirection

PK	ElementID	int
FK1	ProfileID	int
	Priority	int
	Title	ntext
	Style	nvarchar(64)
	ShellFolder	nvarchar(255)
	RedirectToFolder	nvarchar(255)
	Enabled	bit
	Rules	ntext
	Class	nvarchar(64)
	OS	nvarchar(255)
	ConnectionType	nvarchar(64)
	Timing	nvarchar(255)
	Description	nvarchar(255)
	CreatedBySID	nvarchar(100)
	LastModifiedBySID	nvarchar(100)
	LastModifiedDate	datetime
	ElementEnabled	nvarchar(20)

PK	ProfileItemRecordID	int
	Identity	int
	ProfileItemGUID	uniquidentifier

Profile_Display

PK	ElementID	int
FK1	ProfileID	int
	Priority	int
	EnableNumLock	nvarchar(64)
	DisablePrintPopup	nvarchar(64)
	RemoveWelcome	nvarchar(64)
	RemoveVistaMouseTips	nvarchar(64)
	RemoveVistaMouseTips	nvarchar(64)
	RemoveShortcutTo	nvarchar(64)
	RemovePinFast	nvarchar(64)
	RemoveNSN	nvarchar(64)
	RemoveMyDocuments	nvarchar(64)
	RemoveOnlineServices	nvarchar(64)
	EnableCMD	nvarchar(64)
	Wallpaper	nvarchar(255)
	MyComputer	nvarchar(255)
	NetworkNeighborhood	nvarchar(255)
	Owner	nvarchar(255)
	Company	nvarchar(255)
	ContextMenuRemoveControl	nvarchar(64)
	Enabled	bit
	Rules	ntext
	Class	nvarchar(64)
	OS	nvarchar(255)
	ConnectionType	nvarchar(64)
	Timing	nvarchar(255)
	Description	nvarchar(255)
	CreatedBySID	nvarchar(100)
	LastModifiedBySID	nvarchar(100)
	LastModifiedDate	datetime
	ElementEnabled	nvarchar(20)

Profile_ServicePacks

PK	ElementID	int
FK1	ProfileID	int
	Priority	int
	OSVersion	nvarchar(255)
	UpdateVersion	nvarchar(255)
	UpdateExecutable	nvarchar(255)
	OSLanguage	nvarchar(64)
	Enabled	bit
	Rules	ntext
	Class	nvarchar(64)
	OS	nvarchar(255)
	ConnectionType	nvarchar(64)
	Timing	nvarchar(255)
	Description	nvarchar(255)
	CreatedBySID	nvarchar(100)
	LastModifiedBySID	nvarchar(100)
	LastModifiedDate	datetime
	ElementEnabled	nvarchar(20)

Profile_SoftwareDeployment

PK	ElementID	int
FK1	ProfileID	int
	Priority	int
	PublishedPackages	nvarchar(10)
	Action	nvarchar(10)
	InstallAsynch	nvarchar(10)
	InstallSilent	nvarchar(10)
	TransformFiles	ntext
	CmdLineOptions	ntext
	Server	nvarchar(255)
	WaitForDownload	nvarchar(10)
	AllowPackageDefer	nvarchar(10)
	PackageDeferTime	nvarchar(50)
	PackageDeferProgress	nvarchar(50)
	ElementEnabled	nvarchar(20)
	Enabled	bit
	Rules	ntext
	Class	nvarchar(64)
	OS	nvarchar(255)
	ConnectionType	nvarchar(64)
	Timing	nvarchar(255)
	ScheduleCycle	nvarchar(255)
	Description	nvarchar(255)
	CreatedBySID	nvarchar(100)
	LastModifiedBySID	nvarchar(100)
	LastModifiedDate	datetime

Profile_PreEngineScripts

PK	ElementID	int
FK1	ProfileID	int
	Priority	int
	Script	nvarchar(255)
	Enabled	bit
	Rules	ntext
	Class	nvarchar(64)
	OS	nvarchar(255)
	ConnectionType	nvarchar(64)
	Timing	nvarchar(255)
	Description	nvarchar(255)
	CreatedBySID	nvarchar(100)
	LastModifiedBySID	nvarchar(100)
	LastModifiedDate	datetime
	ElementEnabled	nvarchar(20)

Profile_Path

PK	ElementID	int
FK1	ProfileID	int
	Priority	int
	Path	ntext
	Enabled	bit
	Rules	ntext
	Class	nvarchar(64)
	OS	nvarchar(255)
	ConnectionType	nvarchar(64)
	Timing	nvarchar(255)
	Description	nvarchar(255)
	CreatedBySID	nvarchar(100)
	LastModifiedBySID	nvarchar(100)
	LastModifiedDate	datetime
	ElementEnabled	nvarchar(20)

Profile_Logging

PK	ElementID	int
FK1	ProfileID	int
	Priority	int
	FieldList	ntext
	LogFileLocation	nvarchar(255)
	Enabled	bit
	Rules	ntext
	Class	nvarchar(64)
	OS	nvarchar(255)
	ConnectionType	nvarchar(64)
	Timing	nvarchar(255)
	Description	nvarchar(255)
	CreatedBySID	nvarchar(100)
	LastModifiedBySID	nvarchar(100)
	LastModifiedDate	datetime
	ElementEnabled	nvarchar(20)

Profile_Internet

PK	ElementID	int
FK1	ProfileID	int
	Priority	int
	SearchPage	ntext
	DownloadDir	nvarchar(255)
	ProxyEnable	nvarchar(64)
	ProxyServer	nvarchar(255)
	ProxyPort	nvarchar(64)
	ProxyBypass	nvarchar(64)
	ProxyOverride	ntext
	ProxyConfigURL	nvarchar(255)
	Enabled	bit
	Rules	ntext
	Class	nvarchar(64)
	OS	nvarchar(255)
	ConnectionType	nvarchar(64)
	Timing	nvarchar(255)
	Description	nvarchar(255)
	CreatedBySID	nvarchar(100)
	LastModifiedBySID	nvarchar(100)
	LastModifiedDate	datetime
	ElementEnabled	nvarchar(20)

Profile_General

PK	ElementID	int
FK1	ProfileID	int
	Priority	int
	PurgeTempLocation	nvarchar(64)
	PasswordWarningDays	nvarchar(64)
	FreeSpaceWarningLimit	nvarchar(64)
	ClearLogin	nvarchar(64)
	LimitConcurrentDrive	nvarchar(64)
	DisconnectAllDrives	nvarchar(64)
	DisconnectNetworkPrinters	nvarchar(64)
	DisconnectPrinters	nvarchar(64)
	DisableOfficeAssistant	nvarchar(64)
	ClearAllPoliciesFirst	nvarchar(64)
	RemoveIETour	nvarchar(64)
	RemoveInternetConnectionWizard	nvarchar(64)
	Enabled	bit
	Rules	ntext
	Class	nvarchar(64)
	OS	nvarchar(255)
	ConnectionType	nvarchar(64)
	Timing	nvarchar(255)
	Description	nvarchar(255)
	CreatedBySID	nvarchar(100)
	LastModifiedBySID	nvarchar(100)
	LastModifiedDate	datetime
	ElementEnabled	nvarchar(20)

Profile_NIFiles

PK	ElementID	int
FK1	ProfileID	int
	Priority	int
	Action	nvarchar(64)
	Filespec	nvarchar(255)
	Section	ntext
	Value	ntext
	Data	ntext
	Enabled	bit
	Rules	ntext
	Class	nvarchar(64)
	OS	nvarchar(255)
	ConnectionType	nvarchar(64)
	Timing	nvarchar(255)
	Description	nvarchar(255)
	CreatedBySID	nvarchar(100)
	LastModifiedBySID	nvarchar(100)
	LastModifiedDate	datetime
	ElementEnabled	nvarchar(20)

Profile_GroupPolicy/Templates

PK	ElementID	int
FK1	ProfileID	int
	Priority	int
	ADMFFiles	ntext
	ADMXFiles	ntext
	ADMXLocation	ntext
	UserRegistry	ntext
	ComputerRegistry	nvarchar(20)
	ElementEnabled	ntext
	Enabled	bit
	Rules	nvarchar(64)
	Class	nvarchar(64)
	OS	nvarchar(255)
	ConnectionType	nvarchar(64)
	Timing	nvarchar(255)
	Description	nvarchar(255)
	CreatedBySID	nvarchar(100)
	LastModifiedBySID	nvarchar(100)
	LastModifiedDate	datetime

Profile_PostEngineScripts

PK	ElementID	int
FK1	ProfileID	int
	Priority	int
	Action	nvarchar(255)
	Enabled	bit
	Rules	ntext
	Class	nvarchar(64)
	OS	nvarchar(255)
	ConnectionType	nvarchar(64)
	Timing	nvarchar(255)
	Description	nvarchar(255)
	CreatedBySID	nvarchar(100)
	LastModifiedBySID	nvarchar(100)
	LastModifiedDate	datetime
	ElementEnabled	nvarchar(20)

Profile_WindowsFirewall

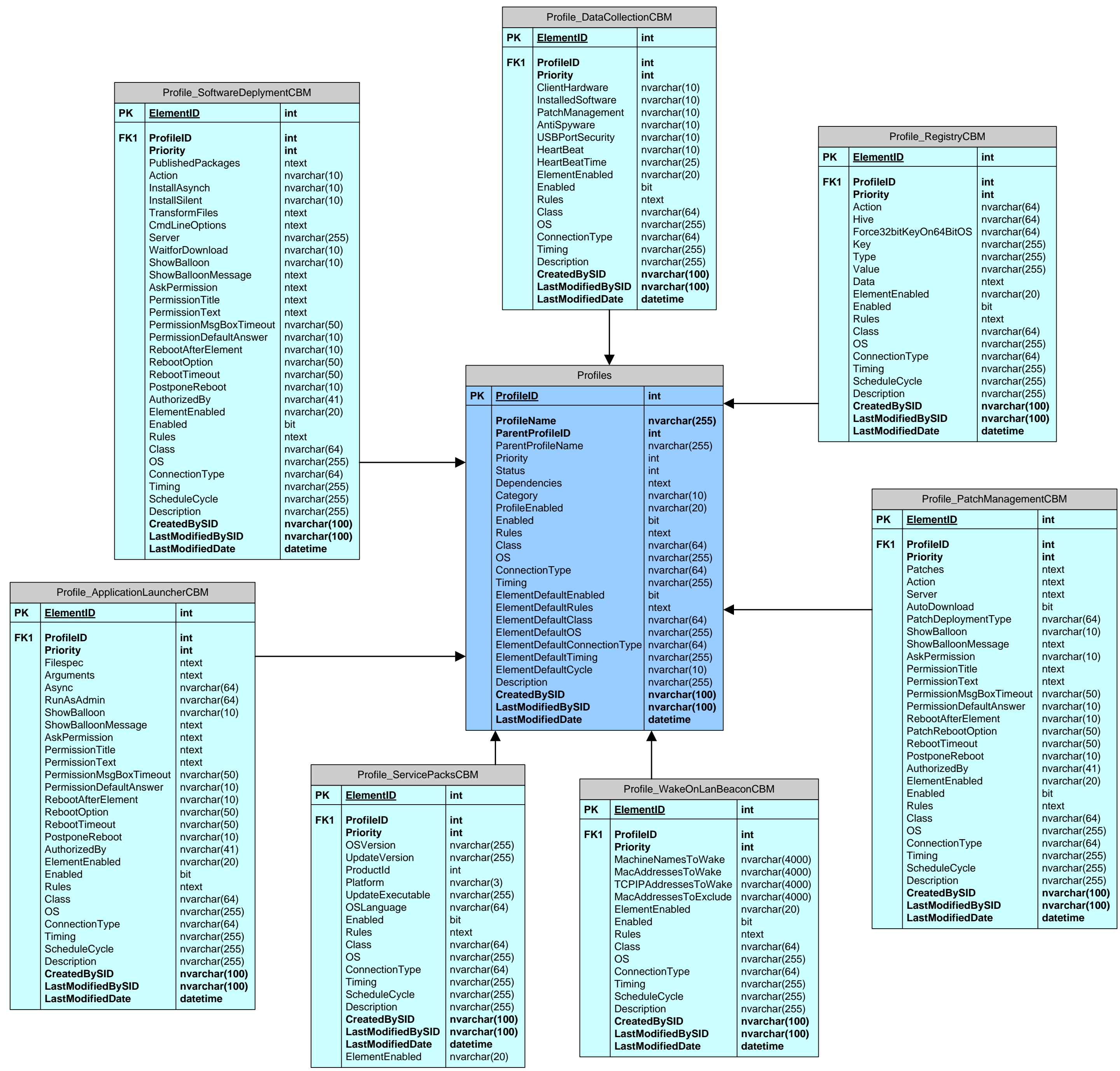
PK	ElementID	int
FK1	ProfileID	int
	Priority	int
	Action	nvarchar(64)
	PortList	ntext
	Notification	nvarchar(64)
	FileAndPrintSharing	nvarchar(64)
	NoExceptions	nvarchar(64)
	Outgoing	nvarchar(64)
	Redirect	nvarchar(64)
	Parameter	nvarchar(64)
	Time	nvarchar(64)
	Mask	nvarchar(64)
	Quench	nvarchar(64)
	Destination	nvarchar(64)
	Router	nvarchar(64)
	Public	nvarchar(64)
	PrivateOut	nvarchar(10)
	PrivateIn	nvarchar(10)
	PrivateIn	nvarchar(10)
	DomainOut	nvarchar(10)
	DomainIn	nvarchar(10)
	ElementEnabled	nvarchar(20)
	Enabled	bit
	Rules	ntext
	Class	nvarchar(64)
	OS	nvarchar(255)
	ConnectionType	nvarchar(64)
	Timing	nvarchar(255)
	Description	nvarchar(255)
	CreatedBySID	nvarchar(100)
	LastModifiedBySID	nvarchar(100)
	LastModifiedDate	datetime

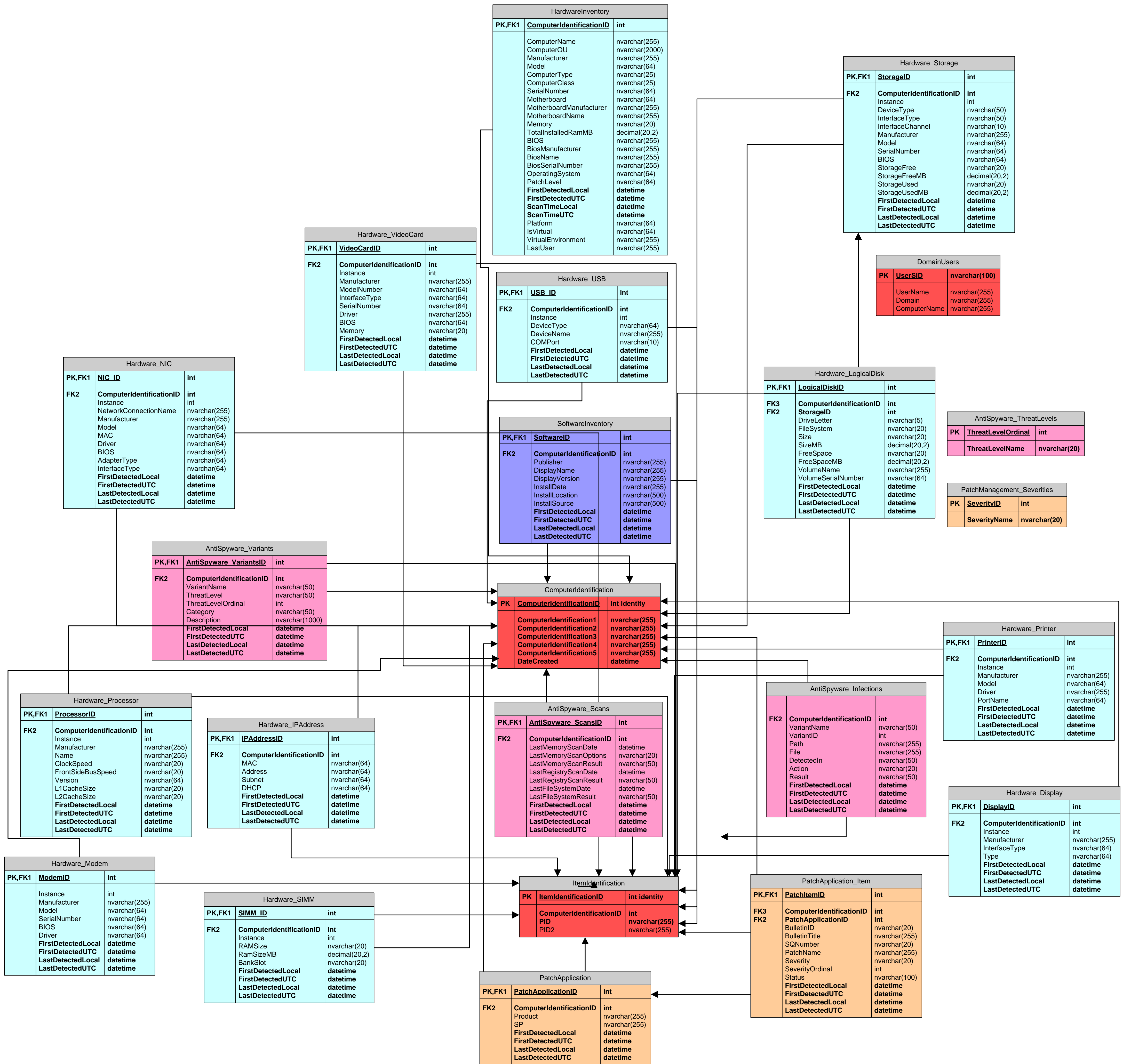
Profile_SecurityPolicies

PK	ElementID	int
FK1	ProfileID	int
	Priority	int
	Policy	ntext
	Setting	int
	Enabled	bit
	Rules	ntext
	Class	nvarchar(64)
	OS	nvarchar(255)
	ConnectionType	nvarchar(64)
	Timing	nvarchar(255)
	Description	nvarchar(255)
	CreatedBySID	nvarchar(100)
	LastModifiedBySID	nvarchar(100)
	LastModifiedDate	datetime
	ElementEnabled	nvarchar(20)

Profile_Shortcuts

PK	ElementID	int
FK1	ProfileID	int
	Priority	int
	Action	nvarchar(255)
	Location	nvarchar(255)
	Name	nvarchar(255)
	Target	ntext
	Arguments	ntext
	IconFile	nvarchar(255)
	IconIndex	nvarchar(255)
	WorkingDir	nvarchar(255)
	RunWindow	nvarchar(255)
	Override	nvarchar(64)
	ShortcutKey	nvarchar(255)
	ShortcutComment	ntext
	Enabled	bit
	Rules	ntext
	Class	nvarchar(64)
	OS	nvarchar(





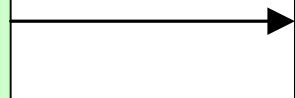
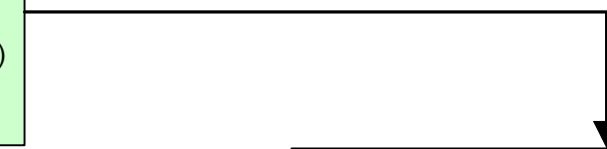
ComputerSession1		
PK	ComputerSessionID	int
FK1	ComputerIdentificationID	int
	SessionEvent	nvarchar(64)
	ActivityTimeLocal	datetime
	ActivityTimeUTC	datetime

UserSession1		
PK	SessionID	int
	ComputerSessionID	int
	UserDomain	nvarchar(255)
	UserID	nvarchar(255)
	UserSID	nvarchar(64)
	ComputerDomain	nvarchar(255)
	ComputerName	nvarchar(255)
	ConnectionType	nvarchar(64)
	AuthenticatingServer	nvarchar(64)
	LocalPrivilege	nvarchar(64)
	DomainPrivilege	nvarchar(64)
	UTCOffset	int
	SessionStartTimeLocal	datetime
	SessionStartTimeUTC	datetime
FK1	ItemIdentificationID	int

UserSessionActivity1		
PK	SessionActivityID	int
FK1	ComputerIdentificationID	int
	SessionID	int
	SessionEvent	nvarchar(64)
	UTCOffset	int
	ActivityTimeLocal	datetime
	ActivityTimeUTC	datetime

ComputerIdentification1		
PK	ComputerIdentificationID	int identity
	ComputerIdentification1	nvarchar(255)
	ComputerIdentification2	nvarchar(255)
	ComputerIdentification3	nvarchar(255)
	ComputerIdentification4	nvarchar(255)
	ComputerIdentification5	nvarchar(255)
	DateCreated	datetime

ItemIdentification1		
PK	ItemIdentificationID	int identity
	ComputerIdentificationID	int
	PID	nvarchar(255)
	PID2	nvarchar(255)



DAConfigurationAuditLog		
PK	RBAuditID	int
	AuditName	nvarchar(255)
	Operation	nvarchar(50)
	ProfileID	int
	ProfileName	nvarchar(255)
	RoleID	int
	RoleName	nvarchar(255)
	ProfileElementID	int
	ProfileElementDescription	nvarchar(255)
	ObjectName	nvarchar(100)
	SystemUserSID	nvarchar(100)
	SystemUserOrGroupName	nvarchar(255)
	AdministratorSID	nvarchar(100)
	AdministratorName	nvarchar(255)
	AdministratorDomain	nvarchar(255)
	ComputerName	nvarchar(255)
	Description	nvarchar(255)
	LogTime	datetime