
Upgrading from GFI MailSecurity 8 to GFI MailSecurity 10

Due to fundamental architectural changes between GFI MailSecurity 10 and GFI MailSecurity 8, it is not possible to install GFI MailSecurity 10 on top of an existing installation of GFI MailSecurity 8.

This section therefore shows you how to:

- Replace your current GFI MailSecurity 8 installation with GFI MailSecurity 10.
- Migrate the GFI MailSecurity 8 configuration settings to GFI MailSecurity 10's new configuration database format.

NOTE: If GFI MailSecurity 8 was installed in SMTP mode and GFI MailSecurity 10 is installed in Active Directory mode, you will not be able to migrate the settings due to user-based rules. This also applies if GFI MailSecurity 8 was installed in Active Directory mode and GFI MailSecurity 10 is installed in SMTP mode.

To upgrade from GFI MailSecurity 8 to GFI MailSecurity 10, follow these steps:

1. Uninstall GFI MailSecurity 8.
2. When the GFI MailSecurity 8 uninstallation completes, certain files are left behind under the root folder where GFI MailSecurity 8 was installed. One of these files is the `avapicfg.rdb` file located in the Data sub-folder.

NOTE: Do not delete this file since it contains the GFI MailSecurity 8 configuration settings. You will need this file to migrate the settings from GFI MailSecurity 8 to GFI MailSecurity 10.

3. Install GFI MailSecurity 10 as shown in the 'Install GFI MailSecurity' section of this chapter.

NOTE: To install GFI MailSecurity 10, you need to have the following installed on the machine:

- Microsoft .Net framework 1.1 / 2.0
- MSMQ – Microsoft Messaging Queuing Service.
- Internet Information Services (IIS) – SMTP service and World Wide Web service.

NOTE: Do not install GFI MailSecurity 10 to the same path where GFI MailSecurity 8 was installed, to prevent files such as `avapicfg.rdb` from being overwritten.

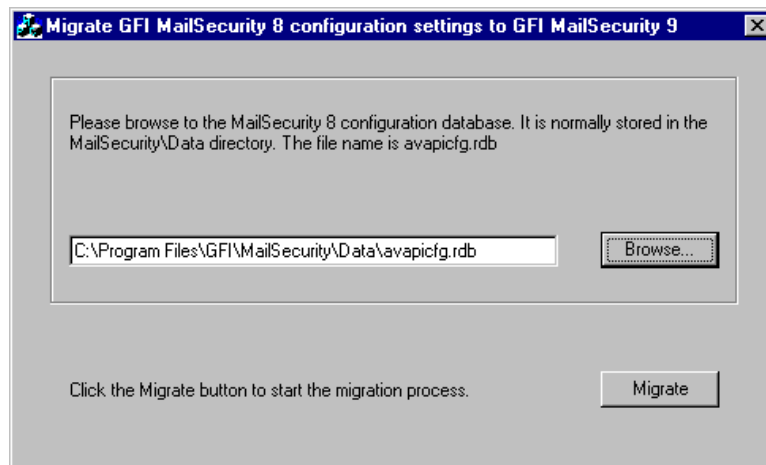
4. After the installation of GFI MailSecurity 10 is complete, you need to stop all GFI-related services along with the IIS Admin service, from the Services control applet. Then you can run the GFI MailSecurity 8 settings migration tool.

NOTE: You must stop the following services before going on to the next step:

- GFI Content Security Attendant Service
- GFI Content Security Auto-Updater Service
- GFI MailSecurity Attendant Service
- GFI MailSecurity Scan Engine
- IIS Admin
- Simple Mail Transfer Protocol (SMTP).

5. To migrate the GFI MailSecurity 8 settings to the GFI MailSecurity 10 configuration database, you need to run the msec8upg.exe tool found in the GFI MailSecurity 10 folder, for example:

c:\program files\GFI\ContentSecurity\MailSecurity.



Screenshot 23 - GFI MailSecurity 8 configuration settings migration tool

6. Double-click the msec8upg.exe file.


7. When the tool loads, click the **Browse** button. Select the avapicfg.rdb file from the data sub-folder under the GFI MailSecurity 8 root folder.

8. Click the **Migrate** button.

NOTE: If you click the migrate button and the user lookup mode of GFI MailSecurity 8 and GFI MailSecurity 10 do not match (for example GFI MailSecurity 8 was installed in SMTP mode and GFI MailSecurity 10 is installed in Active Directory mode or vice versa), an error like the one shown below will be displayed and you will not be able to migrate the settings due to user-based rules.



Screenshot 24 - User lookup mode mismatch.

9. When the migration process completes, a **Configuration was successfully converted** information dialog will be displayed. Click the **OK** button to close the information dialog and click the close button  to close the migration tool.

10. You now need to start all the services that you stopped in step 4 above, from the Services control applet.

11. Use the GFI MailSecurity 10 configuration to check that the GFI MailSecurity 8 settings were migrated correctly.

Upgrading from GFI MailSecurity 9 to GFI MailSecurity 10

NOTE: The upgrade process cannot be reverted. If you upgrade GFI MailSecurity to version 10, you cannot go back to version 9 of the product.

If you are currently using GFI MailSecurity 9, you can upgrade your current installation. The GFI MailSecurity 9 configuration settings are kept. You need to enter the fully purchased license key after the upgrade completes. For information on how to obtain the new license key, visit <http://customers.gfi.com>.

To upgrade:

1. Launch the GFI MailSecurity 10 setup file on the machine on which you have installed GFI MailSecurity 9. Setup will prompt you whether you wish to remove the current version of GFI MailSecurity 9 and install GFI MailSecurity 10. Click the Yes button to proceed.
2. Setup will now proceed to install GFI MailSecurity 10 in exactly the same manner as a new installation (for a detailed description, see the 'Installing GFI MailSecurity' section of this chapter), however it will not let you change the destination folder.